

**Kesgrave Sixth Form**

your next

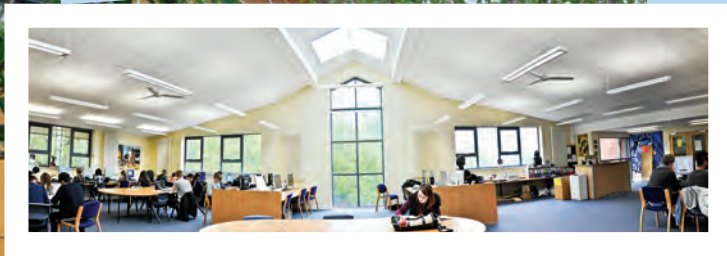
**big**  
step

**2023**

**2024**

# welcome to

# 6th



# the Kesgrave way

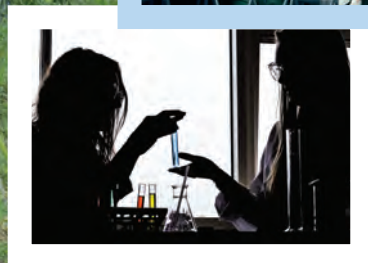
# form



**In order for our students to become well-rounded, confident adults, we have created a culture of independent learning and creative thinking, coupled with an aspirational outlook.**

What makes us different is the people. We believe we have a very rare thing; a community. Everyone within the Sixth Form, and indeed the entire school, has respect, tolerance and a mutual understanding for one another.

Our aim is for students to leave Sixth Form thinking 'I really enjoyed that experience' – knowing that they have been consistently encouraged and supported by the teachers and staff. Exam results are important too, but students making the most of the opportunities available to them is our real success.



# Kesgrave results

At Kesgrave, we make sure our students achieve results of which they can be proud. As a Sixth Form, we acknowledge that everyone is different but with our collaborative approach, we strive to ensure that each student reaches their potential.



## Lottie Woodley

### **Year 13 Student**

The teaching and support at Kesgrave Sixth Form is incomparable. There's constant help for those who need it, whether it be for academic problems or wellbeing. It has made such a difference to my education knowing there are teachers who genuinely take an interest in my success!



### Results

26% - A\*-A  
50% - A\*-B  
77% - A\*-C  
99% - A\*-E

# 73%

of students progressed directly onto Higher Education. 86% going to their first choice university, 9% to their insurance and 5% to alternative course.

# 14%

of students have gone straight into employment. Just under a third of which are taking a Gap year before applying to university next year.

# 156

students left Kesgrave in the Summer of 2022.

# 13%

of students have gone onto an apprenticeship or college course.

*“ At Kesgrave High School Sixth Form, we welcome all students who have a genuine desire to learn, coupled with a motivation to focus and succeed. We aim to support, guide and encourage students and our results reflect both the commitment of the school and the mature approach of students to their studies. ”*

Mrs S Wheatley, Director of Sixth Form

# Kesgrave sixth form

Designed with you in mind, our Sixth Form is a creative, welcoming environment that will teach each and every student how to make the most of every opportunity. Sixth Form is the stepping stone between high school and the 'real' world. We're here to help you make the decisions that will shape your future. With the right guidance and encouragement (plus a fair share of first-hand experience), we'll help you find your niche and get ready for your next steps.



*“ Throughout your time at Sixth Form you become more independent with your learning and as a person. There are opportunities to work alone and progress yourself. However, there will always be a teacher around to support you. ”*

Holly Wagstaff - Year 13



*“ My experience at Kesgrave Sixth Form has given me opportunities to develop both academically and as a person, whilst in a welcoming and safe environment. The support from the staff has allowed me to flourish and increase my confidence in my abilities and the study environments have provided a productive area to study with a wide variety of resources available.”*

Hannah Fozzard – Year 13



# The facilities

With two dedicated Sixth Form buildings; featuring state-of-the-art classrooms, meeting areas and social hubs; students are encouraged to take control of their environment by adapting it to their style of learning. If you have a study period and work best with your headphones plugged in and your head in a book, feel free. If you want to have a spirited discussion with your classmates about a psychological theory, make full use of the meeting area. There's even an outdoor classroom located in the Site of Special Scientific Interest, for those wishing to get outside and get their hands dirty.

## State-of-the-art Lecture Theatre



If you should go on to Higher Education, a lecture theatre will become part of your everyday life. At Kesgrave, we use this versatile space for performances, lectures, and recreational and social activities.

## First Class Facilities



Bright, airy and spacious, the Sixth Form rooms allow for freethinking creativity to flourish, as well as being jam-packed with resources and knowledge.

## Science Labs



If you're considering a future career that involves white coats, test tubes and flammable liquids, then our Science labs seek to inspire.



## Creative media

*“As a student who prefers artistic subjects, the facilities available here at Kesgrave Sixth Form allow me to reach my potential, and establish and build upon my skills.”*

Olivia Singeton – Year 13

### Technology Spaces



Thinking outside the box is actively encouraged at Kesgrave. Innovation, design, manufacturing and marketing – pop it all together and it could be you facing the Dragons in the Den!

### Music Tech



With room for you to explore and develop an appreciation of music, students at Kesgrave are encouraged to produce performances, and learn about composition and arrangement with a dedicated recording studio.

### Catch up at The Foyer (Exclusive Sixth Form Catering Facility)



Open all day to allow students to access hot and cold food and drinks, keeping you sustained whilst you study.

**Kesgrave**

# pastoral support

At Kesgrave Sixth Form there is a strong sense of community with very supportive staff.

Student well-being is at the centre of our ethos and there is an “open door” policy with the Director of Sixth Form and each Head of Year for students and parents. We also have access to a Counsellor and Student Support Officer – for those who need broader support from wider professionals.

**Year 12 are in Tutor Groups, allowing for consistent pastoral support.**

Students are put into form groups where their tutor is a subject specialist in one of their chosen subjects. There are certain tutor activities that will be subject based.

Each student over the course of the year has a number of one-to-one meetings with their tutor to gain individual feedback and strategies to achieve their best.

Tutor group activities are delivered including transition skills for 6th form, enrichment, PSHE and inter-form challenges.

PSHE looks at relevant issues such as driving safety, money management and post-18 destinations.

**Year 13 have a Personal Tutor, who they meet once every 2 weeks on a one-to-one basis.**

This allows students to talk about post-18 plans and progress with studies. The tutor will help with application processes and reference writing as well as giving individual advice on how to improve outcomes.

We try and match the tutor with the particular pathway students are interested in.

# Support for your next steps:

We know how important this time is to plan for your post 18 pathway and there are a number of ways in which we support you through this journey including PSHEE, tutor time and one to one advice and guidance. You will also receive support from subject teachers who have considerable experience of working with students who achieve the highest possible grades.

Each year we hold our BEST (Business, Enterprise, Skills and Training) Event where we invite speakers to run workshops based on professions students have asked for. It is a chance to network, gain insight into a variety of occupations and the progression routes within them.

## For those interested in university our support includes:

- Individual tutorials with Personal Tutor.
- Personalised workshops on how to write a competitive Personal Statement for UCAS.
- Providing students with Kesgrave Alumni mentors in the field that they are interested in.
- Mock interviews with subject specialist staff or individuals from the profession.
- The opportunity to go to a higher education convention and trips to local universities such as Cambridge, Suffolk and Essex University.

## Aiming high:

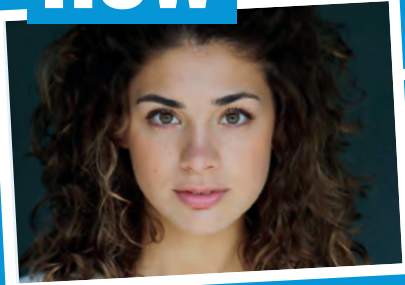
For those students who are interested in applying to Oxbridge, Russell Group Universities and highly selective degree courses such as Medicine and Law we support by:

- Going to St Catharine's College, Cambridge University to hear a talk from an Admissions tutor about what makes a successful applicant and have a look around the college
- Providing students with Kesgrave Alumni mentors in the field that they are interested in and/or have been successful in gaining a place at their chosen university/course
- Providing tutorial support for the STEPS, BMAT and other pre-admission tests
- Personal tutors who have specialist knowledge and experience in their chosen course/university
- Provide a free Medicine Conference for those interested in becoming a doctor
- Provide opportunities and support to get onto Summer Schools courses at London Universities
- Provide interview practice for competitive courses with subject specialists
- Provide opportunities and support to get internships during the summer at the end of Year 12 at companies such as KPMG and PWC.

## For those seeking apprenticeships or employment:

- All sixth form students can book as many appointments with our onsite Careers Advisor.
- We offer bespoke workshops on interview techniques, CV writing and how to get apprenticeships and any other areas that students feel they would find helpful.
- We have a number of guest speakers in areas that students have requested.
- Lunch-time drop-in sessions with local employers and workshops on different career pathways.
- Personal tutors who have a knowledge of the apprenticeship route.

## Where are they now



### Sophia Capasso

Professional Actress

English Literature, Art and Maths  
(2011 – 2013)

**“Friendly atmosphere created by the students and teachers.”**

I came to Kesgrave from Stoke and was initially apprehensive about fitting in. My fears couldn't have been more unfounded. With a welcoming form teacher (Mrs McGregor) I soon found my place and my highlight of my time at Kesgrave was the friendly atmosphere created by the students and teachers.

I decided that University wasn't for me, and I have Mrs Williamson in the Careers Department to thank for putting me in touch with the BT Apprenticeship. Together, we found one that favoured my ICT skills and I'm fortunate enough to be able to work in a field that I love, whilst gaining a qualification at the same time.



### Matt Gambell

Director and Game Developer at GSP

Studied A-Level Film Studies, Media Studies  
& Music Technology (2004 – 2011)

I look back very fondly on the 7 years that I spent at Kesgrave. The educational and extra curricular opportunities at school were exceptional, offering something for everyone.

I owe much of my success to the wonderful teachers, whose genuine enthusiasm and support filled me with the confidence to pursue my dream career as a Doctor.

**“I owe much of my success to the wonderful teachers”**

I feel like going to Kesgrave sixth form was one of the best decisions I ever made. I was welcomed into a community of hard working and driven students with teachers that would go the extra mile to help you. Although it was the impressive art department that first attracted me, the maths and English departments in particular were fantastic. I learnt how to get the best out of myself and the type of person I wanted to be. They were the best lessons by far.

***“ I learnt how to get the best out of myself. ”***

## Ashley Draycott

ICT Apprentice Higher, BT Innovate and Design  
Studied A-Level ICT, History and Business Studies  
(2009 – 2011)



Kesgrave Sixth Form gave me the chance to pursue my passion and try out the things I love. The support from the staff and encouragement to try new things within film and computing enabled me to leave with the skills I needed to go further into my career through university and beyond.

***“ Kesgrave Sixth Form gave me the chance to pursue my passion ”***

## Jo Cozens

Junior Doctor - General Surgery  
Studied A-Level Biology, Sociology & Chemistry  
(2004 – 2011)



# Careers

## Information, Advice and Guidance

To complement your studies, Kesgrave High School is in the enviable position of having a dedicated Careers Suite in the 6th Form block. This is staffed throughout the school day and may be used by 6th Formers during free periods.

The Careers Library is a dedicated research facility containing printed materials, bespoke careers computer programmes and other resources for a wide range of careers. Current job vacancies and work experience opportunities are emailed to 6th Formers throughout the year. Many companies use the school as a talent pipeline, sending representatives into school to actively recruit school leavers. In addition to career-specific resources, there are also up-to-date prospectuses for every University in the UK, together with information about gap years, studying abroad and the university application process.

One-to-one appointments with Mrs Williamson – a qualified Careers Guidance Professional – can be arranged during free periods to discuss everything from university or course choices, to job seeking and preparation for interviews. Time is spent during Year 13 PSHE sessions on university applications or job seeking, depending on your particular focus.



# Entry

# Requirements

At Kesgrave Sixth Form, we give you the opportunity to make your own choices. We have a wide range of subjects on offer, and although we are here to advise, the final decision ultimately lies with you. If the sound of a subject inspires or intrigues you, have a go. You never know, you might discover a hidden passion.

What sets Kesgrave apart from other Sixth Forms is that we fit the timetable around you and your subject choices. We find that this way ensures happy students who are studying their 'first-choice' subjects, rather than having to take a subject you're not all that keen on just because it fits into that timetable block.

Our entry policy is designed to be flexible and accommodating to all students. It will, however, specify grades to be achieved for entry.

6 GCSE/BTEC passes at Level 4 or above are required. In addition, we recognise the importance of Maths and English Language GCSE, and would expect a 4 or above in at least one of these subjects.

It is desirable for you to achieve a Level 5 or above in the subject (or related subjects) that you wish to study at Sixth Form.

If you would like to study Maths, Biology, Chemistry and Physics at A-Level it is desirable for you to achieve a Level 6 or above in the subject you wish to study.

In addition, A-Level Biology, Chemistry and Physics would also need a Level 5 in Maths.

Our experience shows that students taking these subjects will be successful only if they begin them with a very secure understanding of the subject matter.

We consider each student individually; we look at their exam results, any special circumstances and the view of the teachers about their potential and achievements at GCSE/BTEC level.

# Designed to suit you

# Vocational Qualifications

## Applied Psychology

Psychology is the study of the relationship between behaviour, performance and mental processes. Applied psychology is the application of this knowledge in order to understand events, treat mental health issues, improve sporting performance, and

**P20**

## Applied Science

The course looks at the different disciplines of science (biology, chemistry and physics). We will build on the knowledge gained at GCSE in areas such as cell structure, understanding the periodic table and use of electronic waves.

**P21**

## Child's Play, Learning and Development

This qualification provides learners with a respected certificate recognised by employers and higher education institutions. You will cover child development, health and safety practice and play in early years settings.

**P22**

## Computing

Learners will develop a common core of computing knowledge and study areas such as computer systems, security and encryption, principles of computer science including programming and computational thinking.

**P23**

## Core Maths

Core Maths is a course for those who want to keep up their valuable maths skills but are not planning on taking AS or A-Level mathematics. At the end of the one-year course, you will come out with a level 3 qualification – similar to an AS. The qualification is assessed by final examination.

**P24**

## Creative Digital Media Production

This personalised, practical course enables students to research a range of media industries before planning, creating and evaluating their own products in a variety of media formats.

**P25**

## Criminology

Criminology is the study of crime, criminals and the law. This course will draw on elements of Sociology, Psychology and Biology. At the end of the one-year course, you will come out with a level 3 qualification – similar to an AS.

**P26**

## Engineering

Engineering offers the opportunity for learners to identify and solve real problems by designing and making products or systems. Engineering is an inspiring, rigorous, theoretical and practical subject that will allow students to design and make prototypes that solve real world problems.

**P27**

## Health & Social Care

Health and Social Care (H&SC) combines elements of many different school subjects including; sociology, biology, psychology, law and Citizenship. The course links to many different sectors of industry where you could make a difference in someone's life.

**P28**

## ICT

This course will encourage students to select and use appropriate ICT tools and techniques to help them carry out investigations, capture and handle data, solve problems, make decisions, and present and communicate information.

**P29**

## Music Performance

This course involves group and solo performances, in front of the class and also in the Thomas Theatre, not forgetting a gig night at a local venue. Lessons will feature workshops and jam sessions also.

**P30**

## Sport

Sport offers the opportunity to learn about how different body systems work together and their importance to sports performance. It also explores the fitness industry in depth, looking at career opportunities in that field in particular.

**P31**



## Course requirements

## A-Levels

## A-Levels & BTEC

# 6

## GCSE's at grade 4 - 9

### Accounting

This course is ideal for those who enjoy problem solving, have an interest in business and also likes working with numerical data. You'll develop a knowledge and understanding of the purposes of Accounting, and then apply this to a variety of concepts, techniques and procedures.

**P32**

### Ancient History

Learn about the politics and societies of Ancient Greece and Rome, two civilisations that form the foundations of Western European culture.

**P33**

### Art & Design Fine Art

The Fine Art, Art & Design course lets you develop your ability to appreciate the visual world, and to respond in a personal and creative way.

**P34**

### Art & Design Graphic Communication

On the Art and Design: Graphic Communication course you will learn a range of traditional drawing and digital artwork skills and produce personal, creative outcomes across a range of graphic products.

**P35**

### Art & Design Photography

An exciting and challenging course, this is suitable for you if you wish to develop your existing photographic skills and interests to a higher level. It's appropriate for those wishing to complement their other studies through a lens based enquiry.

**P36**

### Biology

You will take an in-depth journey through the field of Biology, studying a huge variety of topics along the way. Practical work will be a key part of your studies, making clear links to the concepts being studied whilst providing application to real world contexts. Biology is not only a must for those planning to pursue a biology related degree but for anyone who has an innate curiosity in the natural world around us.

**P37**

### Business

The business course is organised across four key themes which include current issues and revolve around a problem - solving, dynamic approach to understand the world of business.

**P38**

### Chemistry

Chemistry provides a deep understanding of the material world. Starting with familiar concepts such as the structure of the atom and the periodic table, we look in ever increasing detail at the structure and properties of the world we inhabit.

**P39**

### Computing

Computing is a rich and deep discipline in its own right. It explores foundational principles and ideas, rather than training pupils in skills related to particular software.

**P40**

### Dance

To do this course, you must love dance! Dancers will be required to train, perform, build on their physical and interpretative skills, attend classes, keep healthy and rehearse. Students will also need to be able to talk and write about dance; yes write essays, analyse professional works and do theory related homework.

**P41**

# A-Levels

## Design & Technology Product Design

The course encourages a wide view of technology, enabling students to design and make products in a large range of materials. This will encourage independent learning, creativity and innovation.

**P42**

## Design & Technology Fashion and Textiles

The study of Textiles will develop a student's capacity to design and make products, engaging in both practical and theoretical study. They will appreciate the visual world, responding in a personal and creative way by producing a prototype of their choice.

**P43**

## Drama & Theatre Studies

The course requires that you act, direct, study and evaluate Drama and Theatre. You should be creative, analytical and excited about all aspects of Drama and Theatre – not just acting!

**P44**

## Economics

Economics is split into two broad themes; the Operation of Markets and Market Failure, and the National and International Economy.

**P45**

## English Language

Recognising features and consequences of the use of English language is a vital skill in a range of careers. You will learn to analyse and evaluate spoken, written and electronic language to see who has produced it, why they have done so and more interestingly, how that language has influenced an audience.

**P46**

## English Literature

At AS you will study texts in all 3 forms of literature; poetry, prose and drama. At A-Level, in addition to further study in the 3 forms, the opportunity for independence comes in the form of coursework.

**P47**

## English Language & Literature

Over the course you will study language and literature using an Anthology of literary and non-literary texts and study two chosen texts. For assessment, you will apply knowledge, understanding and insight gained from literary and linguistic studies.

**P48**

## Environmental Science

This course will allow you to gain a deep and well-informed insight into the scientific processes of the environment and the impact that humans have on these processes.

**P49**

## Film Studies

Film Studies explores how the moving image has maintained its position as one of the most significant cultural forms of the last century. A wide range of theories and concepts related to film will be studied.

**P50**

## French

This course intends to develop an understanding of both spoken and written French in a variety of forms. It will also help to communicate with confidence in French and challenge students to consider issues of importance in contemporary French society.

**P51**

## Geography

This course is designed to highlight the main issues and concepts encountered by young adults in their current and future lives so that they can make better informed decisions.

**P52**

## German

This course intends to develop an understanding of both spoken and written German in a variety of forms. It will also help to communicate with confidence in German through both spoken and written word.

**P53**

### History

History is an excellent academic discipline that promotes the development of many general skills: analytical, organisational, literary, in research and in making judgements and putting forward arguments. Most History students become well educated and well informed individuals.

P54

### Mathematics

The course enhances and develops your Mathematical skills from GCSE. It enables you to study the fundamentals of pure Mathematics (calculus, vectors, algebraic equations, graphs) in addition to applied topics in statistics and mechanics.

P55

### Mathematics (Further)

This course allows you to develop your mathematical skills to an even greater depth and also allows you to study other applications of the subject. For those students thinking of studying Mathematics, Physics or Engineering at University, this course is an excellent base for entry to these courses. This course can only be studied with Maths.

P56

### Media Studies

This subject offers students a theoretical and practical understanding of the mass media, academic methods for analysing media texts and the opportunity to create their own products.

P57

### Music

A-Level Music is mainly centred on an academic study of classical music. Students wishing to take A-Level Music should be approximately grade 5 in theory and be able to perform to a similar level.

P58

### Music Technology

Music Technology is for anyone who has a keen interest in music technology, who enjoys creating and listening to different styles of music and who wishes to extend their practical experience and understanding of music technology.

P59

### Philosophy

Philosophy gives you the opportunity to develop your debating skills and to ask the bigger questions in life. If you are someone who wants to know why then this is the subject for you. In philosophy you learn to critically analyse different arguments and come to your own conclusions.

P60

### Physical Education

Students will study how humans physically and mentally learn how to perform in a sporting situation and how coaches can use this theory to optimise athletes' performances. Understanding of sport is increased further through looking at how sport is organised, funded and developed in the UK.

P61

### Physics

Students study physics within the distinctive 'Advancing Physics' context - based approach. They learn about fundamental physical concepts and how to apply these in everyday and technological situations.

P62

### Politics

If you enjoy debate, discussion and constructive arguments, then this is the course for you. G&P will explore the world around you, the society in which we live, how it works and how it could work.

P63

### Psychology

Psychology is a fascinating study into the human mind. Covering topics such as memory, aggression, obedience, prejudice and learning; students will develop an in-depth understanding over the two year course.

P64

### Sociology

Sociology is the study of society and the way it shapes people's behaviour, beliefs and identities. It covers the way society is organised and the impact of social structures, like gender, class, ethnicity and age. At A Level, students apply sociological analysis to topics such as families and households, education, crime and deviance and beliefs in society.

P65

# Applied Psychology

Psychology is the study of the relationship between behaviour, performance and mental processes. Applied psychology is the application of this knowledge in order to understand events, treat mental health issues, improve sporting performance, and understand how children develop and how to treat criminals.

Everyone taking this qualification will study three mandatory units, covering the following content areas:

- Applications of psychological approaches
- Conducting psychological research
- Health psychology

The mandatory content allows you to concentrate on the development of your knowledge and understanding of psychology, as well as the application of skills that are important in psychology, over an extended period.

An optional unit will also be selected

## How will I be assessed?

There are 2 aspects of assessment for this qualification

If you select the AS – equivalent size qualification (National Certificate) you will undertake;

**Unit 1** – Psychological approaches and applications – Externally Assessed (1h 30 written examination worth 72 marks)

**Unit 2** – Conducting psychological research – Internally Assessed (externally moderated coursework marked at pass, merit or distinction level)

If you undertake the A–Level equivalent size qualification (National Extended Certificate) you will cover units 1 and 2 as outlined above as well as Unit 3 and one other unit from a choice of 4 topics

**Unit 3** – Health psychology – Externally Assessed (2h written examination worth 70 marks)

**Optional unit** - including crime and forensic psychology, child development, sport psychology and psychopathology. The optional unit is internally assessed and externally moderated. You will be awarded marks at pass, merit or distinction level.



## How will I be taught?

In a similar way to all post 16 subjects you will have formal lessons which could be teacher led, coursework seminars or tutorials as well as planned revision in preparation for external assessment.

## Why study it?

**Board: Pearson/Edexcel**

The qualification carries UCAS points and is recognised by higher education providers as contributing to admission requirements to many relevant applied psychology courses.

When combined with other qualifications within a two-year study programme, such as AS/A levels or BTEC qualifications, you can progress into higher education, such as a:

- BSc (Hons) in Occupational Health
- BSc in Education and Child Psychology
- BSc (Hons) in Sport Psychology
- BSc in Forensic and Criminal Psychology

Each of these could lead to careers within a variety of fields such as Human resources, or education.

You should always check the entry requirements for degree programmes at specific higher education providers.

In addition to the applied psychology sector-specific content outlined above, the requirements of the qualification mean that you will develop the transferable and higher-order skills that are highly regarded by higher education and employers.

## For more information

contact Mrs Hands

BTEC Level 3

# Applied Science

The course looks at the different disciplines of science (biology, chemistry and physics). Applied science builds upon the knowledge gained at GCSE in areas such as cell structure, understanding of the periodic table and the use of electronic waves in communication. If you are interested in the different sciences but prefer a different structure and assessment strategy, this offers an alternative to A Levels.

## How will I be assessed?

Equivalent to one A Level: 4 units.  
3 are mandatory and 1 is chosen by the department.  
There are 2 external and 2 internal assessments.

Equivalent to one AS Level: 2 mandatory units.  
1 external and 1 internal assessment.

### Mandatory units –

#### Principles and Applications of Science I.

(Written examination, can be sat in January and Summer. 2 hour exam worth 90 marks).

### Practical Scientific Procedures and Techniques.

Internal assessment – you will be introduced to quantitative lab techniques, calibration and laboratory safety. You will create a detailed report to demonstrate your learning and skills.

### Science investigation Skills.

A task set by the examination board and completed under supervised conditions. Part A is given to students prior to the part B which is undertaken under supervision in a three hour session. Part B is a set task that is undertaken with supervision in a 1.5 hour session. The assessment is worth 60 marks.

### Optional unit:

Internal assessment - Physiology of Human Body Systems. You will focus on the physiological make up of three human body systems (musculoskeletal, lymphatic and digestive), how the systems function and what occurs during dysfunction.

## How will I be taught?

You will have formal taught lessons, conduct research tasks and work on assessed activities in class.

You will be required to undertake laboratory practicals, complete written reports and submit photographic evidence.



## Why

# study it ?

Board: Pearson/Edexcel

The qualification carries UCAS points and is recognised by higher education providers as contributing to meeting admission requirements for many courses if taken alongside other qualifications as part of a two-year programme of learning, including, but not exclusively, those which are science-related.

Science based degree programmes, Research laboratory assistant, and food scientist.

For more information

contact Mrs Leggett

**BTEC Level 3**

# Children's Play, Learning and Development

The BTEC course provides learners with a qualification that is respected by employers, higher education institutions and allows a flexible approach to study.

The focus of the course is children from birth to seven years. This will include Units on:

- Children's Development
- Keeping Children Safe
- Play and Learning

## How will I be assessed?

Two assignments that are set and marked in school

1 Controlled Task – set and marked by Pearson under examination condition

External Written Exam

## How will I be taught?

You will be taught formally about theoretical aspects of the course but you will also be expected to individually investigate, carry out assignments and apply knowledge to assignments meeting clearly designated deadlines.

Internal examinations and the use of past paper materials will also be used.

Work experience in an appropriate setting is compulsory and may require you to have a DBS check. Work experience will take place in one of your study periods a week and be counted as your elective option.



**2 year only**

**Why**

# study it ?

**Board • Pearson**

The qualification carries UCAS points and is recognised by higher education providers.

It is a useful qualification if you have an interest in a potential career in the Early Years sector including Teaching, Speech and Language Therapy, Paediatric Nursing and Childcare.

This course *DOES NOT* enable you to gain EYFS certification.

**For more information**

**contact Mrs Driver**

# Computing

Young people taking their first steps towards a new career need the right blend of technical and academic skills in order to become the highly skilled, work-ready individuals employers and universities look for. BTEC Level 3 Nationals are vocational qualifications designed to help your learners succeed. They have been developed in collaboration with over 5,000 universities, employers and professional bodies with employability at the heart, so your learners can develop the skills and confidence they will need to step into their future.

BTEC Level 3 Nationals provide your learners with:

- modern, work-related qualifications with clear purpose and defined progression routes into higher education or employment
- the help they need to develop high-level skills employers and universities look for such as teamwork, creative thinking, and presentation skills
- the opportunity to build independent research and study skills essential for success at university and in the workplace.

Learners will develop a common core of computing knowledge and study areas such as computer systems, security and encryption, principles of computer science including programming and computational thinking.

## How will I be assessed?

**Unit 2 Fundamentals of Computer Systems** – externally set and examined – 80 Marks 1 hour 45 Minutes

**Unit 7 IT Systems Security and Encryption** – internally set and assessed.

**Unit 1 Principles of Computer Science** – externally set and examined – 90 Marks 2 Hours.

**Optional Unit** – internally set and assessed.

## How will I be taught?

Year 12 two mandatory units will be studied

- Unit 2 Fundamentals of Computer Systems (90 GLH)
- Unit 7 IT Systems Security and Encryption (90 GLH)

Students completing Year 12 will achieve a Certificate which is the equivalent of an AS.

Year 13 one mandatory unit and one optional unit will be studied

- Unit 1 Principles of Computer Science (Mandatory) (120 GLH)
- Optional tbc (60 GLH)

Focus on employability skills.

The assessment criteria for each unit are carefully structured to set a clear level of demand.

## Career Progression

- Higher Education
- Apprenticeships
- Employment in the IT and Computer Science sector

<https://www.bbc.co.uk/bitesize/tags/zhj692p/jobs-that-use-computing-and-ict/1>

<https://nationalcareers.service.gov.uk/job-categories/computing-technology-and-digital>



## Why

# study it ?

**Board: Pearson/Edexcel**

Certificate can be achieved in this course which is the equivalent of an AS or students (minimum UCAS points 8, PASS) can continue to studying into Year 13 to achieve an extended certificate which is the equivalent to an A Level (minimum UCAS points 16 (PASS)).

**For more information**

**contact Miss Summers**

# Core Maths

Core Maths is a course for those who want to keep up their valuable maths skills but are not planning on taking AS or A-Level mathematics. At the end of the one-year course, you will come out with a level 3 qualification – similar to an AS. The qualification is assessed by final examination. It does carry the same UCAS points as other AS subjects.

Core Maths has been designed to maintain and develop real-life skills. What you study is not purely theoretical or abstract; it can be applied on a day-to-day basis in work, study or life, and will include a financial maths element.

It will also help with other A-Level subjects – in particular with science, geography, business studies, psychology and economics.

You will need a Level 4 or above in mathematics at GCSE.

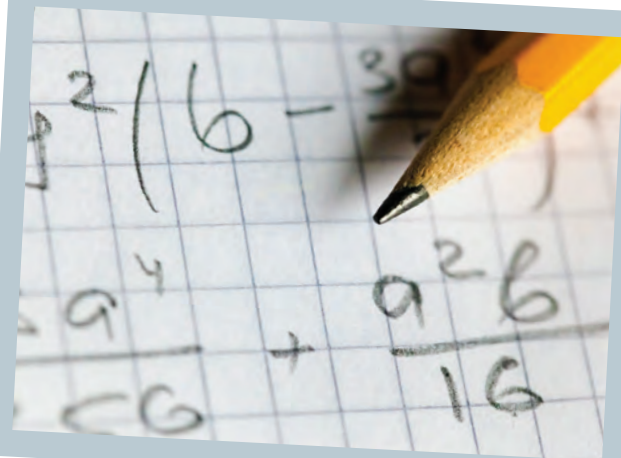
## How will I be assessed?

There will be two exam papers. One on maths and problem solving. The other is from a choice of 3 papers.

## How will I be taught?

You will be taught using a range of methods from textbooks to online materials and self-study to discover the world of mathematics.

Internal examinations and the use of past paper materials will also be used.



## Why

# study it ?

### Board• AQA

In the BTEC National Units there are opportunities during the teaching and learning phase to give learners practice in developing employability skills in the following three main categories:

- cognitive and problem-solving skills
- intrapersonal skills
- interpersonal skills

## For more information

contact Mr Adams



BTEC Level 3

# Creative Digital Media Production

This personalised, practical course enables students to research a range of media industries before planning, creating and evaluating their own products in a variety of media formats such as television advertising, short films, music videos and magazines.

The course enables students to start building a range of technical skills and knowledge, which will help them begin working professionally in various sectors of media production. Students will gain insight into career opportunities available in the media industry, enabling them to make an informed choice regarding career progression or moving on to further study.

Students complete the Extended Certificate (360 GLH) course within the two year study, gaining a qualification that is equivalent to 1 GCE A Level.

## How will I be assessed?

One externally assessed online exam on media representations and analysing unseen media texts.

One externally assessed extended exam, responding to a commission by creating a rationale, pitch, proposal and treatment for a media product.

Two mandatory units that are internally assessed:

- Creating pre-production portfolios
- Film or magazine production

The course is assessed through a series of applied knowledge-based and practical tasks, which will demonstrate research, planning, creation and evaluation skills. There is one two-hour online exam on media representations which can be re-taken twice more to gain the best possible outcome. For the second exam, students are given a set brief to respond to by creating a portfolio of planning and production work. This exam is taken over a two-day period and re-sat once to enhance results. Other internally assessed units can be resubmitted once more in the duration of the course.

## How will I be taught?

Students are taught through teacher-led workshops combined with independent work, usually completed on computers, preparing students for their online exams. Practical production work is also predominantly computer-based using software such as the Affinity suite or Final Cut Pro for video editing. Media equipment is available to borrow for practical productions too.



2 year  
only

Why

## study it ?

Board: Pearson Edexcel

With the international recognition of BTEC courses such as this, students can progress straight into employment, for example: Audio-Visual Technician, Radio Sound Engineer or TV / Film Editor. The Extended Certificate is equivalent to 1 GCE A Level and it is possible for students to use this to progress further into higher education.

For more information

contact Mrs Tighe

# Engineering

This qualification provides a broad basis of study for the engineering sector. It has been designed to support progression to higher education when taken as part of a programme of study that includes other appropriate BTEC Nationals or A Levels. 360 Guided Learning Hours: Equivalent in size to one A Level. There are 4 units 2 are externally assessed. This course is 2 year only.

## How will I be assessed?

Assessment is through a series of tasks and a written examination alongside centre set assignments.

## How will I be taught?

### Unit 1: Engineering Principles:

Learners apply mathematical and physical science principles to solve electrical-, electronic- and mechanical-based engineering problems. (2 hour written exam.)

### Unit 2: Delivery of Engineering Processes Safely as a Team:

Learners explore how processes are undertaken by teams to create engineered products or to deliver engineering services safely. (Assessment is through a series of written assignments, activity logs and witness statements of practical tasks, internally assessed and externally moderated.)

### Unit 3: Engineering Product Design and Manufacture:

Learners will explore engineering product design and manufacturing processes and will complete activities that consider function, sustainability, materials, form and other factors. (Assessment is a task set externally and completed under supervised conditions.)

### Unit 10: Computer Aided Design in Engineering.

Learners develop two-dimensional (2D) detailed drawings and three-dimensional (3D) models using a computer-aided design (CAD) system. (Assessment is through a series of design/drawing assignments, internally assessed and externally moderated.)

## Why study it?

Board: Edexcel/Pearson

What could this qualification lead to?

Progression from this qualification is either to a larger size qualification at Level 3 (e.g. BTEC National Extended Diploma in Engineering or other related subject (e.g. Computing) or if completed alongside other programmes of study will lead to courses in Higher Education. The qualification is recognised by higher education institutions as meeting admission requirements to many relevant courses in a variety of areas of the engineering sector, for example:

BEng (Hons) in Engineering  
 BEng (Hons) in Electronics Engineering  
 BSc (Hons) in Computer Science  
 BSc (Hons) in Mathematics

This qualification also supports progression to job opportunities in the engineering sector. Jobs that are available in these areas include:

Engineering Operative  
 Manufacturing Operative  
 Semi-Skilled Operative

This qualification also supports those following an Apprenticeship in engineering who are looking to work and progress in the engineering sector in an Engineering Operative role.

For more information

contact Mrs Smith



2 year  
only

# Criminology

Criminology is the study of crime, criminals and the law. This course will draw on elements of Sociology, Psychology and Biology. At the end of the one-year course, you will come out with a level 3 qualification – similar to an AS.

It will also allow you to gain an understanding of why people commit crime, drawing on elements of sociology, psychology and biology. You will also look at how criminological theory is used to support policy development and how campaigns are created.

## How will I be assessed?

- 50% controlled assessment – Changing Awareness of Crime: 8 hours, split over 2/3 days. Completed around Christmas. You are allowed to use your folder of notes to support you.
- 50% exam – Criminological Theories: 90 minutes out of 75 marks. Sat in the summer exam series.
- Graded on a scale of A-E

## How will I be taught?

You will learn about real life criminal cases and apply your learning to these cases to assess them. For example, you will study famous cases such as Fred West, the Ipswich murders, Jamie Bulger and Sarah Everard. You will develop your skills of independent research and working to create a detailed folder to support your writing in the controlled assessment.



## Why study it ?

### Board: Eduqas

An understanding of criminology is relevant to many job roles within the criminal justice sector, social and probation work and sociology and psychology. Job roles could include working for the National Probation Service, the Courts and Tribunals Service, or the National Offender Management Service. It would also benefit students looking at roles within the police, forensics, youth work, charity work or working as victim support. This course supports access to studying degrees such as Criminology, Law, Criminal Justice, Sociology and Psychology.

### For more information

contact Miss Messer



# Health & Social Care

About 5 million people work in health and social care in the UK, these include; doctors, nurses, midwives, care assistants, and counsellors. They account for nearly one in ten of all paid jobs in the UK.

The demand for both health and social care is likely to rise, so they will continue to play a key role in UK society and the demand for people to carry out these vital roles will increase.

Within the course you will gain an insight into lots of different elements of the sector including physical, intellectual, emotional and social development across the human lifespan, factors affecting human growth and development and the societal effects of an ageing population.

## How will I be assessed?

There are 2 elements of assessment, Internal and External.

If you select the **1 year AS** – equivalent size qualification (National Certificate) you will undertake;

Unit 1 – Human Lifespan Development – Externally Assessed (1h 30 written examination worth 90 marks)

Unit 5 – Meeting Individual Care and Support Needs – Internally Assessed (externally moderated coursework marked at pass, merit or distinction level)

If you undertake the **2 year A-Level** equivalent size qualification (National Extended Certificate) you will cover units 1 and 5 as outlined above as well as Unit 2 and one other unit from a choice of 4 topics

Unit 2 – Working in Health and Social Care – Externally Assessed 1h 30 written examination worth 80 marks)

Optional unit - including Sociological Perspectives, Psychological Perspectives, Supporting Individuals with Additional Needs and Physiological Disorders and Their Care.

The optional unit is internally assessed and externally moderated. You will be awarded marks at pass, merit or distinction level.

## How will I be taught?

In a similar way to all post 16 subjects you will have formal lessons which could be teacher led, coursework seminars or tutorials as well as planned revision in preparation for external assessment. There is also an opportunity to undertake work experience in an approved Health and Social Care Setting.



## Why study it?

Board Pearson

As with all Btec qualifications they can provide you with transferable knowledge and skills that prepare you for progression to university or employment. Students in the past have entered employment after university in fields such as Nursing, Primary Education and Social Work.

For more information

contact Mrs Driver

The Pearson BTEC Level 3 National Extended Certificate in Information Technology is intended as an Applied General qualification covering 360 GLH and equivalent in size to one A-Level. It is designed for learners who are interested in an introduction to the study of creating IT systems to manage and share information alongside other fields of study, with a view to progressing to a wide range of higher education courses, not necessarily in IT.

Learners will develop a common core of IT knowledge and study areas such as the relationship between hardware and software that form an IT system, managing and processing data to support business and using IT to communicate and share information.

### How will I be taught?

BTEC Nationals use a combination of assessment styles to give you the confidence and knowledge to succeed in the workplace:

- Employer involvement: Students get a taste of their career through direct contact with employers
- Assignments: Set and marked by teachers; verified by Pearson. Still the main form of assessment for all BTEC Nationals.
- Tasks: provide students with work-based challenges in timed, realistic work conditions.
- Written exams: Students create written answers to practical questions in exam conditions.



### How will I be assessed?

#### Unit 1: Information Technology Systems (Mandatory Unit-120GLH)

- Written examination set and marked by Pearson.
- 90 marks.
- 2 hours.

#### Unit 2: Creating Systems to Manage Information (Mandatory Unit – 90GLH)

- A task set and marked by Pearson and completed under supervised conditions.
- The supervised assessment period is five hours over two days. Assessment period timetabled by Pearson.
- Completed using a computer and submitted electronically.
- 66 marks.

#### Unit 3: Using Social Media in Business (Mandatory Unit – 90GLH) & Unit 6 Website Development (Optional Unit – 60GLH)

- Set and assessed internally by KHS teachers

### Why

## study it?

### Board: Edexcel

In the BTEC National Units there are opportunities during the teaching and learning phase to give learners practice in developing employability skills in the following three main categories:

- cognitive and problem-solving skills
- intrapersonal skills
- interpersonal skills

### For more information

contact Miss Summers

# Music Performance

During Music Performance lessons you will develop your skills as a practical musician and the knowledge to use those skills. This will be done through a combination of teacher led workshops and independent practice (as part of a band and individually). Students are encouraged to create an attitude of self-reflection which aids their continuing development as a musician.

## How will I be assessed?

There are several units of work which are all assessed internally.

The units are:-

### 1) Rehearsing Music

Set goals, self-assess progress, show safe and effective practice methods, rehearse as a band.

### 2) Performing Live Music

Set goals, perform to an audience as a band, review success.

### 3) Collaborative Music Composition

Create, develop and record songs in pairs, write lyrics, evaluate and improve methods.

### 4) Performing as a Session Musician

Prepare for, and take part in, unfamiliar recorded music making sessions.

### 5) Music Industry Revenue Flow

Research, create a career plan.

### 6) Improving Instrumental Performance,

Critique instrument and skills, create practice routine, practice, review, refine.

As well as the gigs organised as part of the course, students may get to take part in more gigs as opportunities arise. In the past students have performed at Kesgrave fireworks night, the Cult café, The Angel PH Woodbridge, The Duke of York and The Swan Ipswich and other local venues.

Students finishing their studies at the end of the second year will gain a RSL Level 3 Extended Certificate in the Creative Music Industry. The grading follows the criteria of Pass (16 UCAS points), Merit (32 UCAS points), Distinction (48 UCAS points) and Distinction\* (56 UCAS points).



It requires students to commit to attending the rock school enrichment sessions (Tuesday after school till 5 each week) or other area of responsibility within the music department. There is no written examination and you will be given some opportunity to re-draft work for each unit during the course.

## How will I be taught?

Lessons will consist of practical workshops, playing in bands, teacher presentations/lectures, planning meetings, discussions, internet based research and solo practice, and a lot of self-reflection and doing musical things that you can't already do.

## Why

# study it?

### Board RSL

Students who have studied music at KHS have taken up careers in various music disciplines including: live sound in theatres, recording engineering, composing music for film, class teaching, instrumental teaching, radio production, composing music for adverts and arts administration. Others have become professional musicians and written songs for Rihanna.

## For more information

contact Mr Dolman

# Sport

Year 1 - Students will learn about how the body is made up of different systems, how these systems work together and why they are important to sports performance. They will also complete a unit understanding National Governing Bodies and the rules and regulations in sport. Pupils will also be required to gather film evidence of themselves completing two sporting activities. This is necessary in order for pupils to complete the assignments.

Year 2 - Students will explore screening methods often used in the fitness industry to help design fitness programmes. Students then complete a unit learning about the career and job opportunities in the sports and fitness industry. This includes learning about recruitment processes into the industry

## How will I be assessed?

There are two forms of assessment, internal assessments (assignments) and external assessments (traditional examination).

Unit 1 – **Anatomy and Physiology** – External Exam – 1hr30m

Unit 7 – **Practical Sports Performance** – Internal Assessment

Unit 2 – **Fitness Training and Programming for Health, Sport and Wellbeing** – External Exam – 2hr30m

Unit 3 – **Professional Development in the Sports Industry** – Internal Assessment

## How will I be taught?

Due to the high theory content, lessons for BTEC sport are classroom based, with a variety of methods used. For the coursework elements of the course students will be working on computers to complete assignments in time for strict deadlines.

## Essential Skills

The ability to manage workloads and work independently in order to meet strict deadlines.



## Why

# study it ?

### Board: Pearson/Edexcel

This qualification carries UCAS points and is recognised by higher education providers. The following areas are just an idea of the opportunities available to you from studying this course:

- Sports Science
- Teaching and Coaching
- Sports Therapy
- Physiotherapy
- Personal Training
- Leisure Management

### For more information

contact Miss Mitchell and Mr Winter

A-LEVEL

# Accounting



This course helps students to understand the responsibilities of the accountant and the impacts of their recommendations on the business and the wider environment. Students will build knowledge and understanding of key concepts, principles and techniques that they can apply to real-life scenarios, developing the ability to solve problems logically, analyse data methodically, make reasoned choices and communicate effectively.

## How will I be assessed?

There are two 3 hour exams at the end of year 13.

There is a simple and straightforward structure and layout for the exam papers, using a mixture of question types including multiple choice, short answer and scenario-based questions. Assessment remains 100% exam-based.

## How will I be taught?

You will be taught using a range of methods from textbooks to online materials and self-study to discover the accounting processes

**2 year only**



## Why study it ?

**Board: AQA**

Accounting can be useful for a wide range of careers in finance and management. You can apply to university, with most universities offering pure accounting degrees as well as combined Business Management and Finance courses. Employers recognise the importance of financial competency; for those wishing to enter the profession via an apprenticeship, this offers a pathway to start your professional qualifications.

**For more information**

**contact Mr Tingey**



A-LEVEL

# Ancient History

A Level Ancient History is the study of Ancient Greek and Roman history. You will learn about some critical periods in the history of these civilisations that have done so much to shape the societies of Western Europe in terms of politics, philosophy, law, arts and language.

## Year 12 units:

- Relations between Greek and non-Greek states, 492-404 BC (a study of the relationships and wars between Athens, Sparta and Persia) - 25% of A Level.
- The Julio-Claudian emperors 31BC – AD 68 (a study of the first five Roman emperors, including some of the most notorious in Roman History: Augustus, Tiberius, Caligula, Claudius and Nero) - 25% of A Level.

## Year 13 units:

- The rise of Macedon, 359-323 BC (a study of the rise of the Macedonian Empire under Alexander the Great and his father, Phillip of Macedon - 25% of A Level
- Ruling Roman Britain, AD 43 – c128 – (From the conquests of the Emperor Claudius who captures Colchester and much of southern Britain to Hadrian's consolidation of the frontier in the north with a wall and fortifications) - 25% of A Level.

In lessons we will be preparing the students for the full A Level. Students can take AS Ancient History but only if they are willing to prepare for the specifics of this paper independently. For more details, contact the History Department.

## How will I be assessed?

Ancient History is assessed by two 2.5 hour exams at the end of Year 13; one exam for the two Greek units and one for the two Roman units. This is a 2 year course.



## How will I be taught?

Students will study original authors in translation, e.g., Plutarch, Thucydides, Tacitus and Suetonius and critically analyse and evaluate them as evidence. Coins, artefacts and buildings are also used as evidence. Lessons will involve discussion, debate, presentations, source analysis, group work and use of multi-media materials. There will be an opportunity for all pupils to visit the impressive ancient collections of the British Museum in London.

## Why study it?

### Board- OCR

Ancient History is valued as an academic A level by universities and it is an obvious choice if you want to study Archaeology, Classics, Ancient History or History at university. Also, if you are interested in law and politics, then this course will give you an excellent grounding in different political systems, the development of democracy and the exercise of power. The course provides particularly good training for research based careers because the emphasis on using original, translated, Greek and Roman sources will give students a practical insight into how to undertake research and use the information gleaned.

## For more information

contact Mrs Barnsley

A-LEVEL

# Art and Design

## Fine Art

On the Fine Art course, you will be introduced to a variety of experiences exploring a range of 2D and 3D media, techniques and processes. You will explore both traditional and contemporary ways of working. You will investigate and research the work of a range of artists. You will enhance your appreciation of the visual world and develop your creativity, imagination, analytical, experimental and recording skills. There is a strong emphasis on the development of ideas towards personal outcomes that show a strong visual and conceptual understanding.

### How will I be assessed?

The Fine Art course has two components.

#### Component 1: Personal Investigation (60% of A-Level).

This component has two parts.

##### Part 1 – practical work

- From personal starting points.
- Students submit - supporting sketchbook studies  
- personal final outcomes

##### Part 2 – personal study

- Students submit a formal written investigation (minimum of 1000 words) on a theme of their own choice.

#### Component 2: Externally set assignment (40% of A-Level).

- Theme released to teachers and students on 1st February of Year 13.
- Sustained focus period of 15 hours (controlled conditions) in which students create final response(s) to the theme.
- Students submit - preparatory sketchbook studies  
- personal final outcome(s).

Both components are internally assessed and then externally moderated by Edexcel at our end of course exhibition. All of your work will be marked according to how well you have met the 4 Assessment Objectives of Develop, Explore, Record and Present.

2 year  
only



### How will I be taught?

Lessons comprise of presentations, workshops, demonstrations, discussions, practical assignments, photo shoot/drawing trips and visits to exhibitions. You will also be expected to keep a work journal for each of the units in the form of sketchbooks. In these you will record evidence of the development of ideas including reference to the work of others. The work journal is also a vital tool in supporting and stimulating the artistic process and has a major role in the production and development of your art work, offering a context for exploration and discovery.

Why

## study it?

Board • Edexcel

After A-Level Art you will have a substantial portfolio of work to take to interviews for an Art Foundation course or to one of the many Art and Design degree programmes available. You could find employment in a number of arts-based and creative fields such as Gallery Curatorial work, Advertising, Graphic Design, Illustration, Games Design, Teaching/lecturing or you could work as a freelance artist/designer.

For more information

contact Ms Clarke

A-LEVEL

# Art and Design

2 year only

## Graphic Communication

On the Graphic Communication course, you will be introduced to a wide range of ways of working. You will explore both traditional drawing media and digital editing processes. You will investigate the work of a range of artists and designers and learn about both historical and contemporary influences on visual language. You will learn how to apply your technical and creative skills to a range of real-world scenarios such as designing graphics for a new film or computer game. The course is designed to encourage students to respond to the changing world in which we live with creative, imaginative and personal outcomes.

The Graphic Communication course has two components.

### Component 1: Personal Investigation (60% of A-Level):

This component has two parts which are assessed as a whole:

Part 1: Practical Investigation: from a personal idea, issue or concept.

Part 2: The Personal Study: an in-depth formal written account (1,000 words minimum) of the chosen idea, issue or concept.

### Component 2: Externally set assignment (40% of A-Level):

A question paper is released to teachers and students on 1st February of Year 13. Students must choose one starting point from a range of eight. Students produce a final outcome within 15 hours supervised time. Students submit - sketchbook of studies - final outcome/s

### How will I be assessed?

Both components are internally assessed and externally moderated by AQA at our end of course exhibition. All of your work will be marked according to how well you have met the four Assessment Objectives of Develop, Explore, Record and Present.

You will also take part in peer and self-review tasks in class and one-to-one tutorials to support you in developing personal, refined ideas.

### How will I be taught?

Lessons are mainly practical based comprising; technique demonstrations, workshops, critical and contextual presentations, personal assignments, photo shoot/drawing trips and visits to exhibitions.

A central element of the course is the sketchbook which is a space for recording personal ideas, observational drawings and photoshoots, experimenting with media and techniques, refinement of your ideas and personal outcomes. This should be an ongoing and personal journal of your practical work, allowing you to investigate and respond to your stimulus in a range of ways.



A central element of the course is the sketchbook which is a space for recording personal ideas, observational drawings and photoshoots, experimenting with media and techniques, refinement of your ideas and personal outcomes. This should be an ongoing and personal journal of your practical work, allowing you to investigate and respond to your stimulus in a range of ways.

Why

## study it?

Board: AQA

During the A-Level Graphic Communication course you will produce a portfolio of work demonstrating your creative and technical skills to take to interviews for university degree courses or Art Foundation.

There is a wide range of employment opportunities within the broad field of 'graphics', these include: graphic design, illustration, media design, games design, animation, fashion communication, web design, art direction for advertising, film and television design, teaching/lecturing or you could work as a freelance designer.

For more information

contact Miss Dodgson

A-LEVEL

# Art and Design

## Photography

On the Photography course, you will be introduced to a variety of experiences exploring a range of photographic media, techniques and processes. You will explore in depth both traditional and new technologies. You will investigate and research the work of a range of photographers and artists. You will enhance your appreciation of the visual world and develop your creativity, imagination, analytical, experimental and documentary skills. There is a strong emphasis on the development of ideas towards personal outcomes that show a strong visual and conceptual understanding.



### How will I be assessed?

2 year only

The Photography course has two components.

#### Component 1: Personal Investigation (60% of A-Level).

This component has two parts.

##### Part 1 – practical work

- From personal starting points.
- Students submit - supporting sketchbook studies  
- personal final outcomes

##### Part 2 – personal study

- Students submit a formal written investigation (minimum of 1000 words) on a theme of their own choice.

#### Component 2: Externally set assignment (40% of A-Level).

- Theme released to teachers and students on 1st February of Year 13.
- Sustained focus period of 15 hours (controlled conditions) in which students create final response(s) to the theme.
- Students submit - preparatory sketchbook studies  
- personal final outcome(s).

Both components are internally assessed and then externally moderated by Edexcel at our end of course exhibition. All of your work will be marked according to how well you have met the 4 Assessment Objectives of Develop, Explore, Record and Present.

### How will I be taught?

Lessons comprise of presentations, workshops, demonstrations, discussions, practical assignments, photo shoot trips and visits to exhibitions. You will also be expected to keep a work journal for each of the units in the form of sketchbooks. In these you will record evidence of the development of ideas including reference to the work of others. The work journal is also a vital tool in supporting and stimulating the artistic process and has a major role in the production and development of your photography, offering a context for exploration and discovery.

## Why study it?

Board: Edexcel

After A-Level Photography you will have a substantial portfolio of work to take to interviews for an Art Foundation course or a Photography based degree course. You could find employment in a number of arts-based and creative fields such as Publishing, Gallery Curatorial work, Advertising, Graphic Design, Teaching/lecturing or you could work as a freelance photographer.

### For more information

contact Ms Clarke

# Biology

Biology literally means the study of life and if that's not important, what is? Biology A-Level will give you the skills to make connections and associations with all living things around you. Being such a broad topic, you're bound to find a specific area of interest, plus it opens the door to a fantastic range of interesting careers.

## What will you study?

### AS

1. Biological molecules
2. Cells
3. Organisms exchange substances with their environment
4. Genetic information, variation and relationships between organisms

### A-Level

5. Energy transfers in and between organisms
6. Organisms respond to changes in their internal and external environments
7. Genetics, populations, evolution and ecosystems
8. The control of gene expression

Biology is a practical subject and practical work is at the heart of this course. Throughout your studies you will carry out a variety of practical activities (including 12 required practicals).

## How will I be assessed?

### Exams

At the end of the two years for A-Level, there are three, 2 hour exams. There is no assessed coursework but at least 15% of the marks in the papers are based on practical skills and at least 10% of the marks in the papers are based on maths skills.

### Required practicals

You will also take a separate endorsement of practical skills. 12 required practicals will give you the opportunity to develop the skills needed to investigate the way living things work and behave. The endorsement will be assessed by your teachers.



## How will I be taught?

The course will be taught by Biology specialists. A variety of teaching methods and resources will be used to provide opportunities for effective learning, both in and out of lessons; and to allow you to form clear communicative dialogues with your teachers, ensuring you have the support you need throughout your studies.

## Why

# study it?

### Board: AQA

"Biology enjoys big budgets, a big workforce, and achieves major discoveries. Biology is likely to remain the biggest part of science through the twenty-first century."

### Possible degree options

According to [bestcourse4me.com](http://bestcourse4me.com), the top seven degree courses taken by students who have an A-Level in Biology are: Biology, Psychology, Sport and exercise science, Medicine, Anatomy, Physiology and Pathology Pharmacology, Toxicology and Pharmacy Chemistry.

### Studying A-Level Biology gives you all sorts of exciting career options, including:

Doctor, Clinical molecular geneticist, Nature conservation officer, Pharmacologist, Research scientist, Vet, Secondary school teacher, Marine biologist, Dentist and many more!

## For more information

contact Mrs Halls

A-LEVEL

# Business

The business course is organised across four key themes:

Theme 1 is Marketing and People

Theme 2 focuses on Managing Businesses

Theme 3 explores Decisions and Strategy

Theme 4 looks at Global Business.

These four themes include current issues and revolve around a problem-solving, dynamic approach to understand the world of business.

## How will I be assessed?

If you study to AS-Level you will sit two examinations, each one and a half hours long, sat at the end of one year of study.

If you study to A-Level you will sit three examinations, each two hours long, sat at the end of two years of study.

## How will I be taught?

A range of methods are used including formal teaching, group and individual work. You will also be encouraged to research across the four themes and have a good working knowledge of the world of business.



## Why study it?

Board: Pearson/Edexcel

Students with an AS/A-Level in Business will have access to a wide range of possible careers and higher education opportunities. The focus on international business will equip you to work in the increasingly global market place. Careers in Management, Marketing or Human Resources are all a possibility.

For more information

contact Mr Tingey

A-LEVEL

# Chemistry



Chemistry provides a deep understanding of the material world. Starting with familiar concepts such as the structure of the atom and the periodic table, we look in ever increasing detail at the structure and properties of the world we inhabit. The course covers a range of topics within Chemistry including: Inorganic and Analytical Chemistry, Organic Chemistry, Physical and Thermodynamic properties and Biochemistry

## How will I be assessed?

100% traditional exams. Assessed practical tasks are carried out in the class room and the student is awarded a separate certificate of pass if they demonstrate the required practical standard.

The AS consists of two exam papers. They include short and long answer questions and multiple choice questions. Each paper is worth 50% of the marks

The A-Level consists of three exam papers. They include short and long answer questions, multiple choice questions and questions about practical technique and data analysis. Two papers are worth 35% and the other is worth 30%

## How will I be taught?

Lessons are an introduction to new ideas and a chance to practise work with assistance. Regular homework and end of unit tests will help you to deepen your understanding and check your progress. Practical work is more exciting and more technical than you will be used to from GCSE.



## Why

# study it?

**Board: AQA**

Chemistry is a preferred subject in many fields, not only science based. The ability to work through complex problems to the underlying factors is a key skill in many areas including...

Law  
Economics and Finance  
Business management  
Forensic services

A-Level chemistry is **MANDATORY** for students applying to study:  
Medicine  
Dentistry  
Veterinary Science

**For more information**

**contact Mrs McGuire**

A-LEVEL

# Computing

Computing is a rich and deep discipline in its own right, like Physics and Mathematics. It explores foundational principles and ideas, rather than training students in skills related to particular software. Computing's aspects of design, theory and experimentation are drawn from Engineering, Maths and Science respectively. Computing involves concepts and questions that have the potential to change how we view the world.

## How will I be assessed?

### Paper 1

**What's assessed:** this paper tests a student's ability to program, as well as their theoretical knowledge of Computer Science.

- Assessed**
- On-screen exam: 2½ hours
  - 40% of A-Level

### Questions

Students answer a series of short questions and write/adapt/extend programs in an Electronic Answer Document provided by us.

AQA will issue Preliminary Material, a Skeleton Program (available in each of the Programming Languages) and, where appropriate, test data, for use in the exam.

### Paper 2

**What's assessed:** this paper tests a student's ability to answer questions about subjects such as data representation, computer systems, network and databases.

- Assessed**
- Written exam: 2½ hours
  - 40% of A-Level

### Questions

Compulsory short-answer and extended-answer questions.

### Non-exam assessment

**What's assessed:** the non-exam assessment assesses student's ability to use the knowledge and skills gained through the course to solve or investigate a practical problem. Students will be expected to follow a systematic approach to problem solving.

- Assessed**
- 75 marks
  - 20% of A-Level

2 year only



## How will I be taught?

The emphasis is on *computational thinking*, a problem-solving method based on abstract thinking; algorithmic and mathematical reasoning; and scientific and engineering-based thinking. It is a fundamental life skill<sup>1</sup> that is applicable to nearly any subject. Students who learn computational thinking begin to see a relationship between different subjects, as well as between school and life outside of the classroom<sup>2</sup>.

During the first year, you will also learn to program in Python, which you will use to solve computational problems and to explore key concepts.

<sup>1</sup> Jeannette Wing, <http://bit.ly/khscomp1>

<sup>2</sup> Google, <http://bit.ly/khscomp3>

Why

# study it?

Board AQA

Computing has an immense impact on modern life. The job prospects are excellent and the field is rigorous, intellectually vibrant and multi-faceted. As well as traditional career routes such as Software and App Development, Computing nowadays plays an essential role in every possible discipline, from Entertainment to Communications; Medicine to Weather Forecasting; Design and Engineering; and from Criminology to Manufacturing.

For more information

contact Mrs Abbott



A-LEVEL

# Dance

2 year  
only

The course is centred around three key skills;

- **PERFORMANCE** - Being the best dancer you can be. Building your technique and artistic style.
- **CHOREOGRAPHY** - Developing your creativity and understanding of how to make dances to engage audiences and the examiner.
- **CRITICAL ENGAGEMENT** (appreciating dance) - Being able to talk and write about professional choreographers, their signature style, dance works and themes.

## How will I be assessed?

### COMPONENT 1 - PRACTICAL - PERFORMANCE AND CHOREOGRAPHY

- Choreography and performance of a solo linked to a specified practitioner within an area of study
- Performance in a quartet
- Group choreography
- Practical exam - 80 marks - 50% of A Level  
Marked by an external assessor from AQA

### COMPONENT 2 - THEORY

- Knowledge, understanding and critical appreciation of two set works  
One compulsory set work within the compulsory area of study: Rooster by Christopher Bruce, 1992/1994  
One optional set work within the corresponding area of study: Sutra by Sidi Larbi Cherkaoui, 2008
- Written exam: 2 hours 30 minutes - 100 marks - 50% of A-Level  
Section A: short answer questions (25 marks) and one essay (25 marks) on Rooster and Rambert Dance Company 1966-2002  
Section B: two essay questions (25 marks each) on Independent Contemporary Scene in Britain 2000-Current

## How will I be taught?

Students will be in the dance studio; dancing, learning, teaching and creating. Theory will be delivered through practical and in a more traditional classroom setting. All aspects of the course will be delivered by a team of passionate, expert and professional staff. You will be engaged, challenged and inspired.



Why

## study it ?

Board- AQA

Did you know that 30,000 people are employed in the Dance sector and only 2,500 of those are performers? So what careers can you pursue?

Teach Dance in state schools, the private sector or in the community, Dance Therapy, Choreography, Drama, Musical Theatre, Dance Journalism, Dance Notation, Producing and Company Management, Artistic Director, Dance Film and Photography, Health and Fitness, Nutrition, Physiotherapy or follow your dream of being on stage...

For more information

contact Miss Warfield

A-LEVEL

# Design and Technology

## Product Design

The course has imaginative practical work at its heart. You will develop intellectual curiosity about the design and manufacture of products. We will explore, design, create and evaluate innovative solutions in response to realistic design contexts. You will develop a knowledge and understanding of the core technical, designing and making principles for product design. The A-level is linear and you will sit two exams at the end of the two year course.

### How will I be assessed?

Fifteen percent of the written exams will assess maths skills

#### Paper 1

##### What's assessed

- Technical principles • Designing and making principles • Specialist knowledge

##### How it's assessed

- Written exam: 2 hours • 25 % of A-level

Questions: Mixture of short answer, multiple choice and extended response questions.

#### Paper 2

##### What's assessed

- Technical principles • Designing and making principles • Specialist knowledge

##### How it's assessed

- Written exam: 2 hours • 25 % of A-level

Section A: Product analysis

- Up to six short answer questions based on visual stimulus of product(s).

Section B: Commercial manufacture

- Two extended response

#### Non-exam assessment (NEA)

##### What's assessed

Practical application of:

- Technical principles • Designing and making principles • Specialist knowledge

##### How it's assessed

- Single substantial design and make task

- 50 % of A-level

- Your folio will include research, design and modelling work, evidence of making and evaluation.

Students will undertake a substantial design and make task and produce a final prototype. The context of the task will be determined by the student.

2 year only



### How will I be taught?

You will be open to taking design risks, showing innovation and enterprise whilst considering your role as a responsible designer and citizen. You will develop intellectual curiosity about the design and manufacture of products and systems, and their impact on daily life and the wider world. We will work collaboratively to develop and refine our ideas, responding to feedback from users, peers and expert practitioners. You will gain an insight into the creative, engineering and/or manufacturing industries and develop the capacity to think creatively, innovatively and critically through focused research and the exploration of design opportunities arising from the needs, wants and values of users and clients.

### Why

## study it?

#### Board: AQA

This course will suit a broad range of students, with varying personal skills and abilities. It could complement a wide diversity of subjects, depending on students being more creative or technically minded.

The skills and knowledge content are transferable to many areas and there are numerous related BA degrees/BSC degrees.

Potential careers lie in: Automotive Design, Product Engineering, Graphical Design, Advertising, Music and Film Creative Media, Architecture, Interior Design, Fashion Design etc.

### For more information

contact Mr Girling

A-LEVEL

# Design and Technology

Fashion and Textiles

2 year only



Fashion and Textiles requires students to engage in both practical and theoretical study. This specification requires students to cover design and technology skills and knowledge as set out below. These have been separated into:

- Technical principles
- Designing and making principles.

They will investigate historical, social, cultural, environmental and economic influences on design and technology, whilst enjoying opportunities to put their learning into practice by producing a prototype of their choice. Students will gain a real understanding of what it means to be a designer, alongside the knowledge and skills sought by higher education and employers.

## How will I be assessed?

Fifteen percent of the written exams will assess maths skills

### Paper 1

#### What's assessed

- Technical principles

#### How it's assessed

- Written exam: 2.5 hours 120 marks
- 30% of A-level Questions - Mixture of short answer and extended response.

### Paper 2

#### What's assessed

- Designing and making principles

#### How it's assessed

- Written exam: 1.5 hours 80 marks • 20% of A-level Questions - Mixture of short answer and extended response questions

#### Section A Product analysis:

- 30 marks Up to 6 short answer questions based on visual stimulus of product(s)

#### Section B Commercial manufacture:

- 50 marks Mixture of short and extended response questions.

#### Non-exam assessment (NEA)

#### What's assessed

- Practical application of core technical principles, core designing and making principles and additional specialist knowledge

#### How it's assessed

- Substantial design and make project 100 marks
- 50% of A-level Evidence - Written or digital design portfolio and photographic evidence of final prototype.

## How will I be taught?

In lessons there will be a variety of skills based workshops which will feed into the theoretical aspect of the course. You will broaden your knowledge base in a range of processes. You will also be given presentations and assignments, take part in discussions and tutorials. Some of the things you will learn about are:

- Materials and applications
- Classification of materials
- Methods for investigating and testing materials
- Performance characteristics of materials
- Smart materials
- Technical textiles
- Methods of joining and use of components
- The use of finishes
- Health and safety
- Fashion cycles
- Design theory
- How technology and cultural changes can impact on the work of designers.

In year 13 you will begin work on the NEA, a project directed by you with our support and guidance that will culminate in you producing a prototype.

## Why study it?

Board: AQA

This creative and thought-provoking qualification gives students the practical skills, theoretical knowledge and confidence to succeed in a number of careers. Especially those in the creative industries. For example, Retail Marketing and Purchasing, Fashion Design and Textile Product Design, Film and Theatre Production, Costume Design, Industrial Garment Production, etc

For more information

contact Mrs Lyons

A-LEVEL

# Drama and Theatre Studies

This new course is about 5 things:

- You as an actor
- You as a director
- Studying plays
- Studying practitioners
- Studying live theatre

2 year only

## How will I be assessed?

There's 4 parts to be assessed for the A-Level:

- **PERFORMANCE & COURSEWORK (Year 12)**  
'Practitioners in practice': Study of 1 play and 2 practitioners. You devise a 15-30 minute extract as a group and also produce a portfolio and research report based on practice, research findings and developed practical outcomes.
- **EXAM 1 (Year 12 - 13, Exam in Summer 2<sup>nd</sup> year)**
  1. 'Analysing performance': Study of 2 plays from one theme. You learn about the plays through practical workshops. The Exam tests your knowledge and understanding of the plays
  2. 'Analyse and Evaluate live theatre': you will go to see several live theatre performances over the 2 years. You must evaluate and analyse one of these in the exam. Attending theatre trips is an essential part of the practical and written course.
- **PERFORMANCE & CONCEPT FORM (Year 13 Spring)**  
'Exploring a performance text': Study a short play and perform it as a group! You're marked here as an ACTOR. You also fill in a 'concept' form about the intentions for your personal/group performance.
- **EXAM 2 (Year 13 - Autumn Term and end of Spring, Exam in Summer)**  
'Deconstructing texts for performance': this tests your ability as a DIRECTOR. You'll study a play and then answer questions on your vision for the play and how to put it on stage.

## How will I be taught?

Lessons will be mostly led practically, but there will be a shift between units to theory and written lessons. We believe you'll learn best with as much practical learning as possible and will be able to apply all your experiences into the written work with ease!

Do not think there is little writing - the practical units have heavy written base to the marks as do both examinations.



Why

# study it ?

Board- OCR

This A Level can lead to further study in Drama, Theatre Studies and Performing Arts in Higher Education at degree or HND level. It can be used as part of your course to broaden your studies and may lead on to a career in the Performing Arts industries. Drama and Theatre Studies AS and Advanced GCE complements a range of subjects and is useful in building confidence and improving presentation skills in a range of careers.

For more information

contact Mrs Close

A-LEVEL

# Economics

Economics is structured into four themes. Students build knowledge and understanding of core economic models and concepts in Themes 1 and 2, and then build on this and apply their knowledge to more complex concepts and models in Themes 3 and 4. Students will need to apply their knowledge and understanding to both familiar and unfamiliar contexts in the assessments and demonstrate an awareness of current economic events and policies. It is possible for students to take an AS in this subject.

## How will I be assessed?

There are 3 exam papers, the first two cover Micro and macro economics. Each paper is 2 hours long and comprises of a range of multiple-choice and short-answer questions, one data response question broken down into a number of parts and a choice of extended open-response essays. Paper 3 is synoptic and draws across all 4 themes, across 2 extended response questions.

## How will I be taught?

A range of methods are used including formal teaching, group and individual work. Case studies and investigations will be used to develop understanding of both macro and micro economics in the context of today's world. You will also be encouraged to investigate the economy and have a working knowledge of the current developments in the world of economics.



## Why study it?

Board: Edexcel

Economics is a versatile subject that can help you in a number of careers. Not only could you find yourself working for big corporations, banks or the government but your qualification in economics could also be valuable support in a career like Marketing, Law, Journalism or Teaching.

For more information

contact Mr Tingey

A-LEVEL

# English Language

Recognising features and consequences of the use of English language is a vital skill in a range of careers. You will learn to analyse and evaluate spoken, written and electronic language to see who has produced it, why they have done so and more interestingly, how that language has influenced an audience.

The English Language course will raise your awareness of the language you experience and will help you interpret texts and transcripts of spoken language and understand how not only **what** we say is significant, but also **how** and **why** we say it.

On this course you will discover how a methodical analysis of language can explain how a planned text is written for a specific audience and purpose, how and why spoken language varies across social and geographical groups. You will study topics such as the language of the media and the influence of technology on language use and you will engage in debates such as whether men and women use language differently.

In fact, you will learn all about the greatest skill you possess – language.

## How will I be assessed?

### Paper 1 • Language, the Individual and Society, 2 1/2 hours, 40% of A Level

- Textual variations and representations
- Children's language development (0-11 years)
- Methods of language analysis are integrated into the activities

### Paper 2 • Language Diversity and Change, 2 1/2 hours, 40% of A Level

- Language diversity and change
- Language discourses
- Writing skills
- Methods of language analysis are integrated into the activities

### Coursework • Language in Action, 20% of A Level

- Language Investigation
- Original Writing

## How will I be taught?

Group work, presentations, seminars, discussions and investigations, role plays, research methods and fieldwork in a variety of areas including media texts and spoken language transcripts.



2 year  
only

Why

## study it?

Board: AQA

Careers in Journalism, Law, Business, Publishing, Broadcasting and Speech Therapy. English Language would also be useful in careers such as Nursing, Teaching, Advertising, Police work or Social work - anything involving people and communication.

English Language can be studied as a single subject in Higher Education or can be combined with a wide variety of other subjects. It could form a good basis for study in any arts-based subject in combination with, for example, Sociology, History, Media Studies, Psychology, Law, Politics or Languages.

For more information

contact Miss Scott

# English Literature

English Literature is a subject that by its nature requires learners to consider individual, moral, ethical, social, cultural and contemporary issues. This specification provides a framework for exploration of such issues. As learners progress through the two year course, their studies will be extended in breadth and depth, developing and enhancing learners' techniques of analysis, evaluation and comparison of literary texts in the context of a wider range of texts of cultural and literary significance. The specification requires learners to show knowledge and understanding of the significance of:

- the ways in which writers use and adapt language, form and structure in texts
- the interpretation of texts by different readers, including over time
- how texts relate to one another and to literary traditions, movements and genres
- the cultural and contextual influences on readers and writers.



## How will I be assessed?

This specification is divided into two Units: 'Love Through The Ages' and 'Literature of World War One'. 80% of the course is examined and there is a 20% coursework component in which students will compare texts of their choice. The texts for study have been carefully selected for their richness and diversity. Where two texts have been studied together, they have been selected to illuminate each other, and to enable learners to make connections between literary texts. Students will be examined both in open and closed book exams.

## How will I be taught?

Lessons will be varied, active and centred around discussion and dialogue. You will learn to formulate and express your own ideas and readings of texts, and will be encouraged to work with peers to discover and explore new ways of engaging with texts. You will also be offered the opportunity to see literature in performance.



## Why study it?

### Board: AQA

Students with AS or A-Level English Literature have a wide range of possible Higher Education opportunities. You will learn and use a wide variety of transferable skills during the course. These include writing for a variety of purposes, expressing informed and independent opinions and identifying and developing the links between different literary texts. These skills are in demand from universities and colleges and are also valuable in their own right.

English Literature can be studied as a single subject or can be combined with a wide variety of other subjects. English Literature is well-respected and can lead to a variety of careers within areas such as Broadcasting, Marketing, Publishing, Academia, the Civil Service, Law or Education.

### For more information

contact Miss Kay

A-LEVEL

# English Language and Literature



This combined course blends analytical and evaluative skills across a range of both language and literature text types throughout the two years of study. Building on key skills gained at GCSE level, you will study a broad variety of non-literary and literary text types to study how language and linguistics shape meanings and representations in any text.

During the first year of study, you will gain a secure foundation of linguistic analysis through your anthology study looking at genre, audience and purpose behind language choices. You will also study literature through a whole novel study (*The Handmaid's Tale*) and through the poetry of Carol Ann Duffy - leading to a secure understanding of how language is used by an author in literary works to create character, setting and themes.

In the second year, your range of texts furthers still, with the study of a modern drama text (*A Streetcar Named Desire*) to analyse how linguistics of spoken language would create meaning for an audience of theatre productions. You will also have the opportunity to produce your own creative writing through your study of *The Great Gatsby* where you re-cast and adapt an original passage into your own work. Finally, the element of non-examined assessment gives free choice in your detailed study of language use across a literary and non-literary text you have chosen for your portfolio.

The combined course of Language and Literature offers a perfect blend of both worlds of English, and will allow you to understand the intrinsic connectivity between the two.

## How will I be assessed?

### A-Level 3 Units

**Telling Stories:** Examination 3 hours 40% of A-Level  
One compulsory question on set Anthology  
Two compulsory questions on set texts, prose and poetry

**Exploring Conflict:** Examination 2½ hours 40% of A-Level  
One piece of re-creative writing using an extract and a commentary  
One question on drama text

**Making Connections** (Non-Exam) 20% of A-Level  
A personal investigation into a specific technique or theme in both literary and non-literary discourse (2,500-3000 words)

## How will I be taught?

Lessons will be varied and use whole class formal teaching, discussion, debate, individual and group work, independent research and presentations, using modern film/TV adaptations of the key texts.

2 year  
only

Why

# study it?

Board: AQA

English Language and Literature can be studied separately or as a single subject in Higher Education, and can be combined with a wide variety of other subjects. It could form a good basis for study in any arts-based subject in combination with, for example, History, Media Studies, Philosophy, Law, Politics or Foreign Languages.

For more information

contact Miss Mann



A-LEVEL

# Environmental Science

Environmental Science is the key subject for the future. Studying A-Level Environmental Science will allow you to gain a deep and well informed insight into the scientific processes of the environment and the impacts humans have on these processes.

2 year  
only

## How will I be assessed?

### A-Level

**Paper 1: 3 hour written exam (50%) on:-**

- The Physical Environment
- Energy Resources
- Pollution
- Research Methods

**Paper 2: 3 hour written exam (50%) on:-**

- The Living Environment
- Biological Resources
- Sustainability
- Research Methods

Both papers will be a combination of multiple choice, short answer and extended questions.

## How will I be taught?

You will be taught through a variety of methods including: lecture based lessons, research lessons, discussion based lessons, practical lessons and field trips.

You will have the opportunity to develop a wide variety of scientific skills including: practical, presentation, debating and research skills, as well as a wide variety of scientific communication skills.



Why

## study it ?

Board: AQA

Environmental Science is the perfect stepping stone to a future career in many disciplines and a natural complement to Biology, Chemistry, Physics and Geography.

For more information

contact Miss Huggett

A-LEVEL

# Film Studies

In Film Studies we explore how the moving image has maintained its position as one of the most significant cultural forms of the last century. We cover a wide range of theories and concepts related to the study of film and its place in society. The course examines the language and structures of film along with its social and industrial contexts. At its heart the syllabus recognises our love of popular film and extends our experience of alternative cinema.

## How will I be assessed?

**Component 1: 35% of qualification.** The exam will be on Classical Hollywood, Hollywood since the 1960s and contemporary American independent film and British film.

**Component 2: 35% of qualification.** Varieties of film: film movements, documentary film, global film and short film.

**Component 3: 30% of qualification.** This is coursework and is either the creation of a short film, a screenplay or a photoboard. You will also need to evaluate this.

## How will I be taught?

Lessons are a balance of analysis, research and practical work. There is an emphasis on building skills and confidence in the induction phase, leading to whole-class discussion, group work and independent study. We personalise all coursework assignments and students choose the films and directors they write about.



## Why study it?

Board: WJEC

Film Studies is suitable for students wishing to enter the professional creative media world. It is also useful for those who wish to develop transferable skills of observation, critical analysis and personal reflection, which are essential for lifelong learning. The emphasis on visual storytelling particularly complements the study of Literature and Art. The course also provides a strong basis for undergraduate studies in Film Theory, Film Criticism and Film History, whilst covering practical filmmaking techniques suitable for vocational courses in this field.

For more information

contact Mrs Tighe

2 year only

A-LEVEL

# French

The course aims to build on the language foundations set in place by the study of GCSE French. Pupils will gain a much deeper understanding of how the language works, building their ability to use it for speaking and listening, and reading and writing purposes. It is possible for students to take an AS in this subject.

Pupils will study the following topics:

Aspects of French-speaking society: current trends, Aspects of French-speaking society: current issues.

Artistic culture in the French-speaking world.

Aspects of political life in the French-speaking world and Grammar, plus one text and one film or two texts from the list set in the specification.

## How will I be assessed?

### Paper 1: Listening, Reading and Writing Written exam

(assessing on Aspects of French-speaking society: current trends  
Aspects of French - speaking society: current issues  
Artistic culture in the French - speaking world  
Aspects of political life in the French - speaking world  
Grammar and Translation)  
2½ hours  
100 marks / 50% of A-Level

### Paper 2: Writing exam

(assessing film and book or two books)  
2 hours  
80 marks in total / 20% of A-Level

### Paper 3: Oral exam

(assessing an individual research project and one of the four sub themes from Paper 1)  
21–23 minutes (including 5 minutes preparation time)  
60 marks in total / 30% of A-Level

## How will I be taught?

A range of approaches will be used. There will be some teaching as well as discussion, debate, individual and group work and investigation. Use will be made of the internet, DVDs and literature as well as a course book and accompanying support materials.



## Why study it?

Board: AQA

An A-Level in French can open the door to many career opportunities:

- University Degree in Languages
- Option to link with Business Studies or Law Degrees
- Employment in the Travel industry; employment in Journalism and other Communication industries; Teaching, with further studies.

For more information

contact Miss Leoni

A-LEVEL

# Geography

AQA's A-Level in Geography will excite the mind, challenge perceptions and stimulate investigative and analytical skills. It aims to encourage learners to develop a range of essential skills for Higher Education and the world of work through content which is relevant to any citizen of the planet in the 21st century. Through exciting topics learners will continue to explore the nature of physical and human geography with an equal amount of content in each as well as a field work investigation contributing 20%.

Field work is central to the course and students will have the opportunity to attend a week-long trip to Dorset to put all the theory into practice. This is a highlight of the course where pupils can experience geography very different to their home area, visit World Heritage sites and actually stay in a lighthouse on the Isle of Portland.

## How will I be assessed?

### Component 1 - Physical Geography

- Water and carbon cycles
- Coastal systems and landscapes
- Hazards

Exam 2½ hours

120 marks / 40% of A-Level

### Component 2 - Human Geography

- Global systems and global governance
- Changing places
- Resource Security

Exam 2½ hours

120 marks / 40% of A-Level

### Component 3 - Geography field work investigation

This must be based on the field work carried out over the course and must include data collection in the field. An issue or question which is defined and developed by the student relating to any aspect of the specification.

3000 - 4000 words

Individual assessment

60 marks / 20% of A-Level

2 year  
only

## Why study it?

Board: AQA

A-Level Geography is a highly respected qualification not only for its academic nature but also its delivery of skills and current subject knowledge relevant to the world of today.

As such it is a desirable qualification for any course you might take at university.

For more information

contact Miss Leak



## How will I be taught?

We endeavour to make the learning at A-Level as engaging as possible so we try to include as much field work as we can but also in the classroom we encourage the use of debates and presentations. You will also have the opportunity to work in groups as well as individually.

A-LEVEL

# German

The course aims to build on the language foundations set in place by the study of GCSE German. Pupils will gain a much deeper understanding of how the language works, building their ability to use it for speaking and listening, and reading and writing purposes. It is possible for students to take an AS in this subject.

Pupils will study the following topics: Aspects of German-speaking society.

Artistic culture in the German-speaking world.

Multiculturalism in German-speaking society, Aspects of political life in German-speaking society and Grammar, plus one text and one film or two texts from the list set in the specification.

## How will I be assessed?

### Paper 1: Listening, Reading and Writing Written exam

(assessing on Aspects of German-speaking society  
Artistic culture in the German-speaking world  
Multiculturalism in German-speaking society  
Aspects of political life in German-speaking society  
and Grammar and Translation)

2½ hours

100 marks / 50% of A-Level

### Paper 2: Writing exam

(assessing film and book or two books )

2 hours

80 marks in total / 20% of A-Level

### Paper 3: Oral exam

(assessing an individual research project and one of the four sub themes from Paper 1)

21–23 minutes (including 5 minutes preparation time)

60 marks in total / 30% of A-Level

## How will I be taught?

A range of approaches will be used. There will be some teaching as well as discussion, debate, individual and group work and investigation. Use will be made of the internet, DVDs and literature, as well as a course book and accompanying support materials.



## Why

# study it ?

Board- AQA

An A-Level in German can open the door to many career opportunities:

- University Degree in Languages
- Option to Link with Business Studies or Law Degrees

Employment in the Travel industry; employment in Journalism and other Communication industries; Teaching, with further studies.

For more information

contact Miss Gwilliam

# History

In Year 12 you will study Communist states in the twentieth century. Communism was one of the most significant ideologies of the twentieth century. You will learn about:-

- Russia, 1917–91: from Lenin to Yeltsin (Paper 1)
- Mao's China, 1949 – 76 (Paper 2)

In Year 13 the examined unit will be on:-

- Lancastrians, Yorkists and Henry VII, 1399–1509 (Paper 3)

You will study the dramatic developments in late medieval England that centred around the personalities and political skills of a series of kings, queens and their powerful subjects.

As well as these examined units you will complete a piece of coursework. You will carry out an independent investigation into a particular historical event that is open to a range of interpretations. The event that you will focus on will be the causes of the First World War.

In lessons we will be preparing students for the full A Level. Students can take AS History but only if they are willing to prepare for the specifics of this paper independently. For more details, contact the History Department.



## How will I be assessed?

**Paper 1** Written examination lasting 2¼ hours worth 30% of total qualification

**Paper 2** Written examination lasting 1½ hours worth 20% of total qualification

**Paper 3** Written examination lasting 2¼ hours worth 30% of total qualification

**Coursework** – internally assessed and externally moderated worth 20% of the total qualification

## How will I be taught?

A range of approaches will be used including formal teaching, discussion, debate, individual and group work and investigation. Use will be made of textbooks, newspapers, the internet, DVDs and contemporary literature.

## Why

# study it?

Board • Edexcel

A-Level History is an excellent academic discipline that promotes the development of many general skills: analytical, organisational, literary, in research and in making judgements and putting forward arguments. Very few people who study history follow careers which are directly related to the subject, like lecturer, archaeologist or archivist. Most History students become well educated and well informed individuals who have much to offer a variety of careers and professions. It is highly recommended for students considering a career in Law.

For more information

contact Mr Watson

A-LEVEL

# Mathematics

The course is aimed at enhancing and developing your mathematics skills from GCSE mathematics. It enables you to study the fundamentals of pure mathematics (calculus, vectors, algebraic equations, graphs) in addition to applied topics in statistics and mechanics. The course delves into the beauty of mathematics whilst also showing how mathematics is the backbone of the ever changing digital world.

## How will I be assessed?

There will be 3 papers for the full A-Level or 2 for the AS level.

## How will I be taught?

You will be taught using a range of methods from textbooks to online materials and self-study to discover the world of mathematics. ICT is included in the course, in particular calculator work which is necessary.

Internal examinations and the use of past paper materials will also be used.



## Why study it?

Board: OCR

Studying Mathematics is a good basis for a whole multitude of jobs including: Accountant, Actuary, Archivist, Engineer, Airplane Pilot, Management, Teaching, Insurance, Banking, Retail, Computing, F1 Car Analysis, Economist and many more. It is also a good basis for degrees in Mathematics, Physics, Economics and Engineering.

For more information

contact Mr Adams

A-LEVEL

$f(x)$

# Further Mathematics

This is an additional course that must be taken alongside the Mathematics A-Level.

This course allows you to develop your mathematical skills to an even greater depth and also allows you to study other applications of the subject. For those students thinking of studying Mathematics, Physics or Engineering at University, this course is an excellent base for entry to these courses.

It is also for the student who enjoys Mathematics and wants to study more of the fundamentals such as differential equations, proof, complex numbers and extend their knowledge of applied statistics/mechanics.

## How will I be assessed?

There will be 4 exam papers for the full A Level or 3 for the AS Level

## How will I be taught?

You will be taught using a range of methods from textbooks to online materials to online materials and self-study to discover the world of mathematics. ICT is included in the course, in particular graphical calculator work which is necessary. Internal examinations and the use of past paper materials will also be used.

**You should have a 7, 8 or 9 in GCSE maths to take this course.**



Why

## study it ?

Board: OCR

Studying Further Mathematics alongside Mathematics is an excellent base for studying Mathematics and Physics at University. The increased application pathways also enable progression into Business Studies, Management Science/Studies and Economics degrees.

For more information

contact Mr Adams



A-LEVEL

# Media Studies

This subject offers students a theoretical and practical understanding of the mass media, academic methods for analysing media texts and the opportunity to create their own products.

Students gain insight into a range of technological means of communication, such as television, film, print, advertising and the internet. The course also provides the critical tools necessary to carry out research investigations into the media and create high-quality work in various formats such as film and print.

## How will I be assessed?

### Two year A-Level

Two written exams (70%) and one coursework project (30%)

#### Component 1 exam (30%)

Covers the media forms of: music videos, video games, advertising, film marketing, newspapers, radio and current affairs programmes

Three sections looking at media language and meanings, representations and meanings and contextual study of representation

#### Component 2 exam (40%)

Three sections on TV in the Global Age, Mainstream and Alternative Media in the Magazine Industry, and Media in the Online Age

#### Coursework project (30%)

An individual cross media project based on producing two forms of media from a choice of set briefs relating to the media forms of: television, music advertising and marketing, film advertising and marketing or magazines.

2 year  
only



## How will I be taught?

There will be a mixture of classroom teaching and independent learning. In class a full range of approaches will be used including individual, group work and whole class activities and discussion centred around clear learning objectives relating to the syllabus and media texts and industries.

Why

# study it ?

Board • EDUQAS

With a qualification in Media Studies you could go on to Higher Education or work in the media or a related field. Media Studies offers students the opportunity to use a variety of transferable technical and analytical skills, which equip the individual for life in a media-saturated world.

For more information

contact Mrs Tighe

A-LEVEL

# Music

A-Level Music is mainly centred on an academic study of classical music. Students wishing to take A-Level music should be approximately grade 5 in theory and be able to perform to a similar level at the start of the course.

The syllabus does not have to follow on from GCSE music, so it is open to candidates who have not studied music at Key Stage 4. The course divides into 3 components.

## How will I be assessed?

**Component 1 Performing 30%-NEA**  
(Non-exam assessment (coursework))

Total performance time of 8 minutes at approximately grade 7 level. Performance can be solo and/or ensemble.

**Component 2 Composing 30%-NEA**

2 compositions - 1 free (minimum 4 minutes in length) and 1 brief assessing composition technique (minimum 1 min), Together totalling minimum of 6 minutes.

**Component 3 Appraising 40%- 2 hour Exam**

6 Areas of Study with 3 set works in each

- Vocal Music
- Instrumental Music
- Music for Film
- Popular Music and Jazz
- Fusions
- New Directions

## How will I be taught?

Most lessons for component 3 are teacher led where you will analyse and learn about the set works. In the first year students will develop their composition techniques in preparation for completing the coursework. There will be occasional master classes and solo performances throughout the course to help you prepare for the performances.

Please note that the exam board is subject to change.



## Why study it ?

Board: Edexcel

Students who have studied music at KHS have taken up careers in various music disciplines including: live sound in theatres, recording engineering, composing music for film, class teaching, instrumental teaching, radio production, composing music for adverts and arts administration. Others have become professional musicians and written songs for Rihanna.

For more information

contact Mr Woodley

A-LEVEL

# Music Technology

Music Technology is for anyone who has a keen interest in music technology, who enjoys creating and listening to different styles of music and who wishes to extend their practical experience and understanding of music technology. You will learn to produce performances using sequencing software in a range of musical styles and develop the skills required to make high quality recordings of musical performances. You will also learn how to compose and arrange using technology and develop your knowledge of the principles and development of music technology.

## How will I be assessed?

### Component 1: Recording NEA

(Non-examined assessment (coursework)) 20%

Use production tools and techniques to capture, edit, process and mix an audio recording. One recording, chosen from a list of 10 songs provided by the exam board.

### Component 2: Technology-based composition NEA 20%

Creating, editing, manipulating and structuring sounds to produce a technology-based composition. One technology-based composition chosen from three briefs set by the exam board. Total time must be 3 minutes.

### Component 3: Listening and analyzing

Written examination: 1½ hours 25%

Knowledge and understanding of recording and production techniques and principles, in the context of a series of unfamiliar commercial recordings. Also the development of recording and production technology. Short and long answer questions.

### Component 4: Producing and analyzing

Written/practical examination: 1½ hours 35%

Knowledge and understanding of editing, mixing and production techniques, to be applied to unfamiliar materials. Students will correct and then combine the audio and MIDI materials to form a completed mix.



## How will I be taught?

At the start of the course you will be taught how to use the studio and music technology equipment via practical hands on sessions. You will also be taught how to play and arrange music into a computer based sequencing package. There will also be theory lessons to help you complete the written paper.

## Why

# study it?

Board: Edexcel

Students who have studied music at KHS have taken up careers in various music disciplines including: live sound in theatres, recording engineering, composing music for film, class teaching, instrumental teaching, radio production, composing music for adverts and arts administration. Others have become professional musicians and written songs for Rihanna.

For more information

contact Mr Woodley

A-LEVEL

# Philosophy

This philosophy course covers some of the core areas of philosophy. You will look at;

- **Epistemology** which is the study of knowledge. Within this section you explore what we mean by knowledge and where do we get this knowledge from such as the use of our senses.
- **Moral philosophy** which looks at ethical theories. In this section we explore different ethical theories such as Utilitarianism, virtue ethics and Meta ethics. Knowing the different ethical theories and how they are applied.
- **Metaphysics of God** which looks at the various arguments for and against the existence of God. This includes looking at the problem of evil and religious language.
- **Metaphysics of mind** which looks at what is the mind and how it interacts with the body. In this section we look at Descartes and dualism, physicalist views and functionalists.



## How will I be taught?

Philosophy as a subject is about learning to think in a critical way and to see how logical an argument is or is not. Teaching of philosophy involves your more traditional methods of teaching but backed up by using thought experiments (where you are set a hypothesis to see how you would answer it), debating, questioning and independent work.

2 year  
only

## How will I be assessed?

At A level you will take two 3 hour exams. Paper 1 will be on Epistemology and Moral philosophy and paper 2 will be on the Metaphysics of God and the Metaphysics of mind.

## Why study it?

Board: AQA

In fact, it's surprising just how many career paths a philosophy degree can help with. Doing philosophy can make a significant contribution to any job that requires you to think well. Big business – City firms, banks, management consultancies, chartered accountants – are enthusiastic about people who've studied philosophy, because they know how to think clearly. Philosophy students also go into law, politics, and the civil service. Journalism is a logical career path, since you have to be able to write well and present ideas logically and clearly. Advertising is another choice, and of course it leads into a career into education.

For more information

contact Mrs Kobani

A-LEVEL

# Physical Education

Students will study how humans physically and mentally learn how to perform in a sporting situation and how coaches can use this information to optimise athletes' training and performances.

These theory components are worth 70%, it is important to understand that this new exam course places far greater emphasis on the theory elements. Therefore, whilst students are guided through the practical component, it will be assessed outside of lesson time. Students will be required to collect film evidence of their performances within formal, recognised competitions (eg. Club training is not permitted as film evidence).

Students will also need to be aware that the new approved list of sports has been reduced from previous exam courses so it is important that they check their sport is included.

## How will I be assessed?

### Paper 1 - 35 % of A-level (2 hours)

Section A: Applied anatomy and physiology

Section B: Skill acquisition

Section C: Sport and society

### Paper 2 - 35 % of A-level (2 hours)

Section A: Exercise physiology and biomechanics

Section B: Sport psychology

Section C: Sport and society and technology in sport

### Practical coursework - 30% of A Level

Filmed performance in a fully competitive, formal competition in one approved activity - 15%

Written / Verbal analysis of performance - 15%

2 year  
only

## How will I be taught?

Because of the greater emphasis on theory, lessons are classroom based with one lesson a week allocated to each of the three strands of theory.

You will be taught using a range of methods from textbooks to online materials and self-study. Internal examinations and the use of past paper materials will also be used.



## Why study it?

Board: AQA

The Physical Education A-Level has strong links with Psychology, Biology and Sociology, and many students benefit from studying one or more of these areas.

Advanced Studies in PE are among the very versatile due to the three differing theory components. Studying the subject gives the potential to lead into a wide and varied range of university and career opportunities. These include the following areas:

- Teaching and Coaching
- Sports Science
- Physiotherapy
- Sports Therapy
- Psychological Studies
- Leisure Management
- Biology
- Medicine

For more information

contact Mr Simmons

A-LEVEL

# Physics



Students study physics within the distinctive 'Advancing Physics' context-based approach. They learn about fundamental physical concepts and how to apply these in everyday and technological settings. The course demonstrates the usefulness of the subject and illustrates the impact that discoveries in physics have had on the way people live. There is a constant drive towards new ways of thinking with a clear focus on curiosity-driven Physics.

Teaching of practical skills is integrated with the theoretical topics and assessed both through written papers and, for A-Level only (not AS), the Practical Endorsement.

Unit 1: Development of practical skills.

Unit 2: Fundamental data analysis.

Unit 3: Physics in action. Imaging, sensing, signalling and materials.

Unit 4: Understanding processes. Wave and quantum behaviour and mechanics.

Units 5 and 6 are delivered in Year 13

## How will I be assessed?

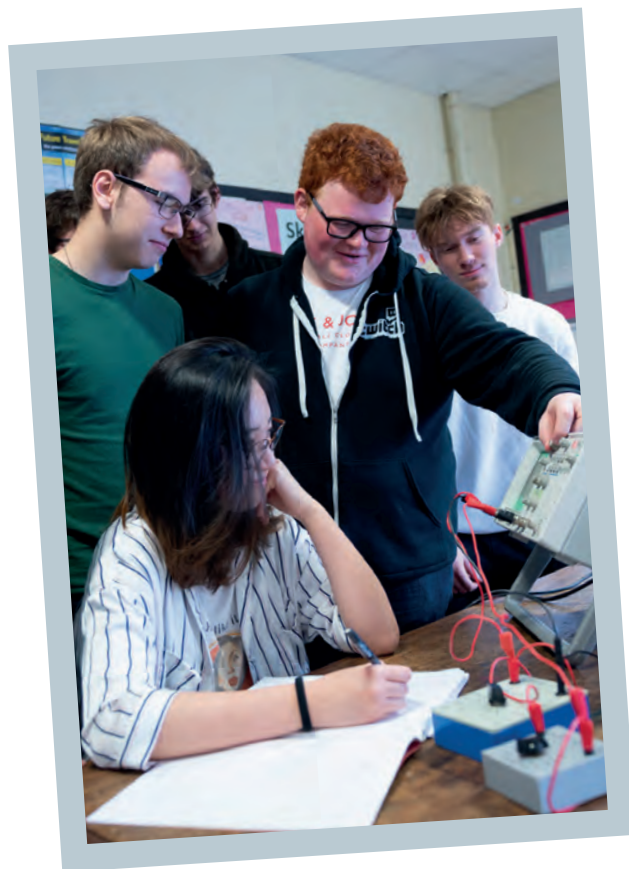
Formal written examinations :

AS two papers covering Units 1 – 4.

A-Level three papers covering Units 1 – 6, paper 3 has an emphasis on practical skills.

## How will I be taught?

It is expected that the content of Units 1 and 2 will be delivered alongside Units 3 and 4. We currently split the curriculum so one teacher teaches the Physics in Action Unit and the other teaches the Understanding Processes Unit. The A-Level course will follow a similar pattern.



## Why

# study it ?

**Board: OCR (Physics B)**

As a Mathematical Science, Physics is useful in contributing towards specific requirements for university entry from Engineering to Medicine and Architecture. Many of our students have gained excellent higher level apprenticeship positions after leaving Sixth Form whilst some of their peers have gone on to study Physics at Oxford and Cambridge. A more versatile qualification would be hard to find.

Remember Physics is best chosen in conjunction with Maths.

**For more information**

**contact Mrs Wynne**

A-LEVEL

# Politics

In **Year 1** you will gain an understanding of how the UK political system works, and how it is linked to contemporary concerns and events as well as the political theory which underpins decisions.

**This will be delivered through three areas:**

1. UK Politics – Political Parties, Pressure Groups, Democracy, Voting
2. UK Government – Constitution, Executive Power, Judiciary, Parliament
3. Core Political Theories – Conservatism, Liberalism, Socialism, Anarchism, Feminism.

In **Year 2** you will look at politics on a global scale, how nations react to each other and global issues such as power, sovereignty, human rights, terrorism, globalisation, international bodies, regionalism, war, conflict, environment, poverty and corruption.

**There will be three exam papers:**

1. UK Politics and Core Political Ideas
2. UK Government and Core Political Ideas
3. Theories of Global Politics

## How will I be assessed?

The course is externally assessed through exams at the end of each year.

### AS-Level

Unit 1 is a 1 hour 45 minute paper  
Unit 2 is a 1 hour 45 minute paper

### A2-Level

Paper 1 is a 2 hour paper  
Paper 2 is a 2 hour paper  
Paper 3 is a 2 hour paper



## How will I be taught?

A range of approaches will be used including formal teaching, discussion, debate, research and presentations, individual and group work and investigation. Use will be made of the internet, literature and contemporary media. Topical news items are regularly used and are encouraged to be debated.

## Why

# study it?

**Board: Edexcel**

The study of government and politics is well respected and can lead to a variety of careers within areas such as Broadcasting, Management, Public Services, Marketing, Publishing, Public Policy, Policy Research, interest groups, local government and the voluntary sector, as well as within politics itself. It can be used with other AS / A2 subjects for entry on to degree or college courses.

**For more information**

**contact Ms Wade**

A-LEVEL

# Psychology

2 year  
only

## Unit 1: Foundations of Psychology

This Unit has four topics and explores the main approaches in Psychology, considering areas such as memory, aggression, obedience, prejudice and learning. These are the topics that will be studied in the first year of the A-Level and also form the AS qualification.

## Unit 2: Applications of Psychology

This Unit investigates two applications of Psychological theory and research. We will explore the fields of Clinical and Criminal Psychology. These topics will be studied in the second year of the A-Level.

## Unit 3: Psychological Skills

This is the synoptic part of the course and will test your ability to design and carry out research, and apply and connect ideas studied on the course to issues and debates in Psychology.

### How will I be assessed?

The A-Level qualification has three exams at the end of the course. All three exams are 2 hours long:  
Unit 1 = 35%; Unit 2 = 35%; Unit 3 = 30%

The AS qualification has two exams at the end of the year:  
Both exams are an hour and a half long, with equal weighting.

### How will I be taught?

A range of approaches will be used including formal teaching, discussion, debate, individual and group work and investigation. Use will be made of the internet, videos, DVD's and contemporary literature.



Why

## study it?

Board: Edexcel

Careers in Psychology include Forensic Psychologist, Sports Psychologist, Educational Psychologist and Clinical Psychologist. Psychology would also be useful in careers such as Nursing, Teaching, Advertising, Police work or Social work, anything involving people and with other A-Level subjects for entry to degree courses.

For more information

contact Mrs Hands



A-LEVEL

# Sociology

Sociology is the study of society and the way it shapes people's behaviour, beliefs and identities. It covers the way society is organised and the impact of social structures, like gender, class, ethnicity and age. Students will apply a sociological analysis to contemporary society, with a focus on the family, the education system, crime and beliefs in society. The course also covers an advanced study of sociological theory and the application of sociological research methods to issues of societal importance.

You do not need to have a GCSE in Sociology to study it at A-Level.

## In Year 12 (AS) students study 2 Units:

Families and Households  
Education and Research Methods

## In Year 13 (A-Level) students study 2 Units:

Beliefs in Society  
Crime and Deviance & Theory and Methods

## How will I be taught?

A range of approaches will be used, including formal classroom teaching, research presentations, individual and group work, discussions and debates and the occasional documentary. Students are expected to read widely outside of lessons in order to keep abreast of contemporary sociological debates.



## How will I be assessed?

### At AS-Level

**Paper 1:** Education with Methods in Context (1.5hr exam)

**Paper 2:** Research Methods and Families & Households (1.5hr exam)

### At A-Level

**Paper 1:** Education with Theory and Methods (2hr exam)

**Paper 2:** Families & Households and Beliefs in Society (2hr exam)

**Paper 3:** Crime & Deviance with Theory and Method (2hr exam)

## Why

# study it?

Board AQA

Many sociologists go on to find work in the public sector, including careers in teaching, nursing, police and social work. Others find their career paths in areas such as marketing, law, counselling or the media. Sociology provides students with transferable skills, such as critical analysis, communication and independent thinking that are applicable to a range of further pathways.

For more information

contact Miss Messer

# Kesgrave-Leiston Football Programme



The Kesgrave-Leiston Football Programme is an opportunity for students to gain Level 3 qualifications whilst receiving high quality football coaching.

**This course is open to male and female students**

**Pathway A:** Students choose any 3 A Level or Btec courses and also follow the football programme. Entry requirements are 6 GCSE/BTEC passes at Level 4 or above.

**Pathway B:** Students choose to study Level 3 Btec Sport and follow the football programme. Please note this option is only available to those students who do not meet the above entry requirements but do obtain 4 GCSE/BTEC passes at Level 4 or above. This pathway will also include work experience and other elective options to make up a full timetable.

Students wishing to take either pathway should already be playing at a good standard of football, be physically fit and have a passion for football and a wish to develop their ability further.

The school based team will play in the English College's Football Association leagues. You may also have the opportunity to play in Leiston FC's Under 18 squad in the Thurlow Nunn Youth League, or their reserve team in the Thurlow Nunn League.

The football aspect of the course has no qualifications associated with it but students will be coached by qualified and experienced coaches from Leiston Football Club. Students will be expected to develop their fitness and conditioning, and appropriate coaching will be provided for this, both on the pitch and in the school fitness suite. There will be a small component of classroom based teaching but the vast majority of the session will be practical training on the AGP. The students will be expected to develop a greater ability to understand, analyse and discuss football performance.

Some of the students may be interested in pursuing football at University. We are able to help with links to some UK universities and also US Sports scholarships.

*“Working in combination with a school gives students the best of both worlds. Taught by education specialists and coached by football specialists.”*

Darren Eadie- First team manager and Head of the Kesgrave-Leiston football programme



# Expeditions



Ever wanted to be part of something that would change your outlook on life?!

If the answer is yes then why not consider enriching your Sixth Form studies with an African adventure.

After many successful expeditions to Greece, Zambia and South Africa, we will be continuing our annual project cycle and venturing out again to maintain and extend the volunteer projects of our previous teams, focussing on sustainable community development and wildlife conservation.

The expeditions have always had a profound effect on both the students and teachers alike and although challenging are highly rewarding and will be an experience you will never forget.



# The Elective programme

To ensure that our students become well-rounded individuals, we encourage them all to take one Elective activity from the programme available. Whatever you go on to do after Sixth Form, it is always good to have a point of difference on your CV or UCAS application, and this opportunity allows students to explore and develop outside the normal constraints of an academic environment.

## Extra Curricular Activities

*Our varying extra-curricular activities also provide the platform for you to indulge your interests and find something you're good at out of the classroom environment. We firmly believe in the 'work hard, play hard' mentality and letting off steam on the football pitch is a great way to counter-balance a tough Maths lesson the hour before.*

## Some of the courses available are

- *Duke of Edinburgh Award*
- *Extended Project Qualification*
- *Literacy, Numeracy, Sports or Music Ambassadors*
- *Debating*
- *Couch to 5K*
- *Adopt a Teacher*
- *Rock School*
- *Work Experience*
- *MOOCs*
- *Acclaim Magazine*
- *Beginners Spanish*



## Calendar of Events Leading to September 2023 Entry into Kesgrave Sixth Form

**Tuesday, 18th October 2022**  
Sixth Form Open Evening for all applicants  
from 6.30 p.m.

**14th November - 25th November 2022**  
Mock Examinations for Kesgrave Students

**Friday, 2nd December 2022**  
Post-16 Taster Day

**Thursday, 15th December 2022**  
Mock Results for Kesgrave Students

**Friday, 20th January 2023**  
Externals Morning

**Friday, 27th January 2023**  
Application deadline for all students

**Friday, 10th February 2023**  
Kesgrave interviews with parents

**April 2023**  
New applicant interviews with parents

# Key dates

**Week beginning 3rd July 2023**  
Sixth Form Induction

**Thursday, 24th August 2023**  
GCSE Results Day

**Thursday, 24th August 2023**  
Sixth Form Enrolment - for all  
applicants

**Wednesday, 6th September 2023**  
Year 12 start

**We hope this has given you a good flavour of life at Kesgrave**

**But if there's any more you'd like to know, please visit our website**

**[www.kesgrave.suffolk.sch.uk](http://www.kesgrave.suffolk.sch.uk)**

**Kesgrave High School & Sixth Form**

**Main Road, Kesgrave, Ipswich, Suffolk IP5 2PB**



**Tel: 01473 624855 (option 3)**

**Email: [6thformoffice@kesgrave.suffolk.sch.uk](mailto:6thformoffice@kesgrave.suffolk.sch.uk)**

**[www.kesgrave.suffolk.sch.uk/sixthform](http://www.kesgrave.suffolk.sch.uk/sixthform)**