

# FINE ART

## Introduction

On the Fine Art course, you will be introduced to a variety of experiences exploring a range of media, techniques and processes for the purpose of self-expression.

Fine Art can communicate ideas and messages about the observed world, the qualities of materials, perceptions, or preconceptions. Fine Art allows us to consider and reflect on our place in the world, both as individuals and collectively.

Fine Art can be used to explore personal and cultural identity, society and how we live, visual language, and technology. On this course, you will investigate and research the work of a range of artists. You will learn from these artists and be inspired by them to create dynamic, conceptual, unique and personal artworks.

You will keep a sketchbook for each project which acts as a visual journal and will document your personal journey and progression on the Fine Art course.

## Aims of the course

On this course you will develop:

- intellectual, imaginative, creative and intuitive capabilities
- investigative, analytical, experimental, practical, technical and expressive skills, aesthetic understanding and critical judgement
- independence of mind in developing, refining
- and communicating ideas, intentions and personal outcomes
- experience of working with a broad range of media
- knowledge and understanding of art, craft, design and media and technologies in contemporary and past societies and cultures
- an awareness of different roles, functions, audiences and consumers of Fine Art



## Knowledge and Understanding

You will gain knowledge and understanding of:

- relevant materials, processes, technologies and resources
- how ideas, feelings and meanings can be conveyed and interpreted in images and artefacts created in your chosen areas of Fine Art
- historical and contemporary developments and different styles and genres
- how images and artefacts relate to social, environmental, cultural and/or ethical contexts, and to the time and place in which they were created
- continuity and change in different styles, genres and traditions relevant to Fine Art practice
- a working vocabulary and specialist terminology that is relevant to your chosen areas of Fine Art

## Areas of Study

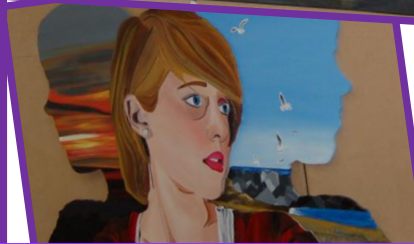
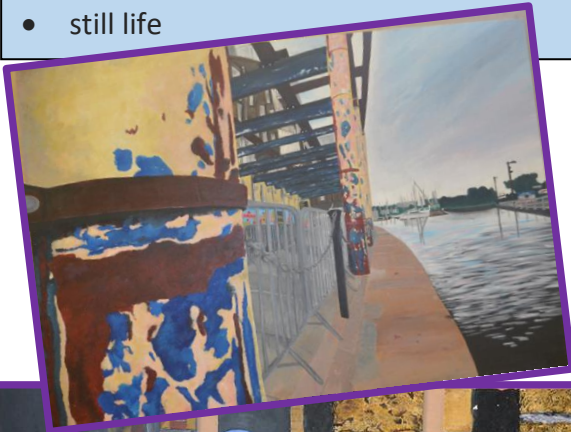
You will be required to work several areas of Fine Art, such as those listed below. You may explore overlapping areas and combinations of areas:

- painting
- drawing
- sculpture
- printmaking
- photography
- portraiture
- landscape - urban, rural and/or coastal environment
- still life

## How will Fine Art fit in with my other subjects?

The analytical and creative problem solving elements of the course will support you in a range of subjects from History, English, Business or Film studies through to Biology, Chemistry, Physics and Maths.

Fine Art also teaches you how to learn from your experiences and work independently – skills valued by employers and higher education institutions alike.



## How will I be assessed?

The Fine Art course has 2 components.

**Component 1: Personal Investigation**  
(60% of A-Level).

This component has two parts.

### Part 1 – practical work

- From personal starting points.
- Students submit:
  - supporting sketchbook studies
  - personal final outcomes

### Part 2 – personal study

- Students submit a formal written investigation (minimum of 1000 words) on a theme of their own choice.

**Component 2: Externally set assignment**  
(40% of A-Level).

Theme released to teachers and students on 1 February of Year 13.

- Sustained focus period of 15 hours (controlled conditions) in which students create final response(s) to the theme.
- Students submit:
  - preparatory sketchbook studies
  - personal final outcome(s).

Both components are internally assessed and then externally moderated by Edexcel at our end of course exhibition. All of your work will be marked according to how well you have met the 4 Assessment Objectives of Develop, Explore, Record and Present.